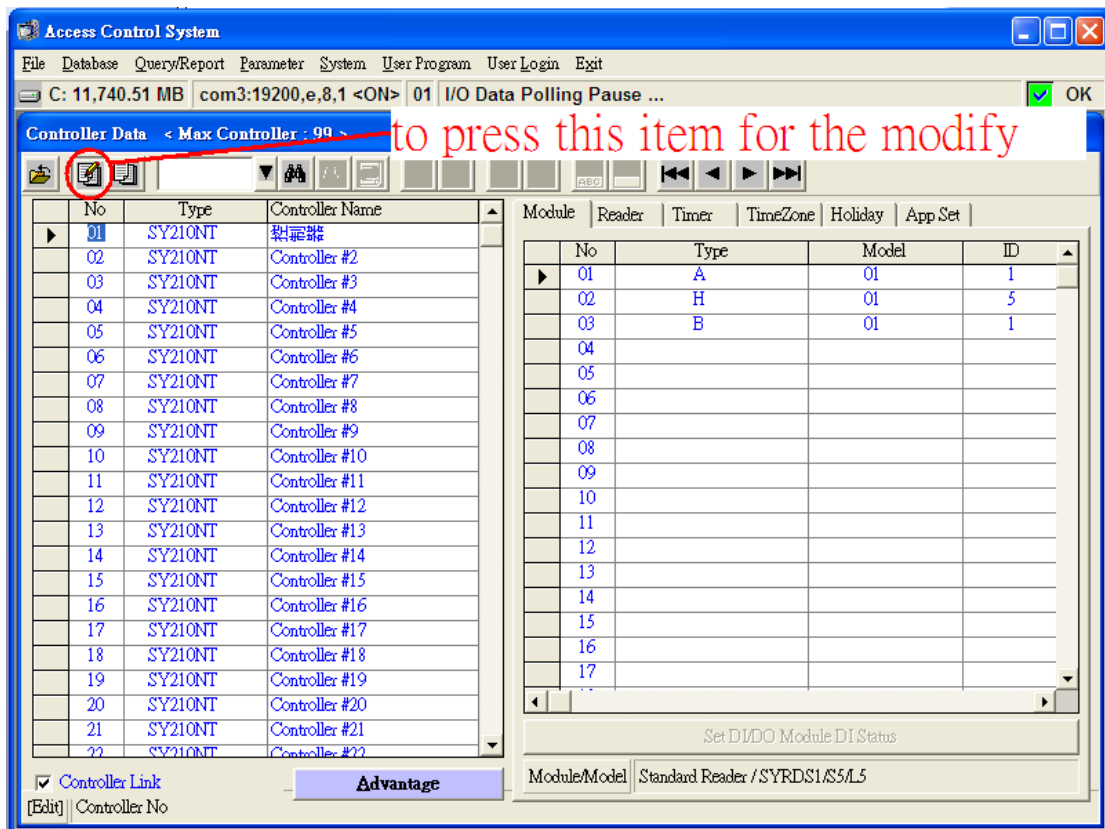
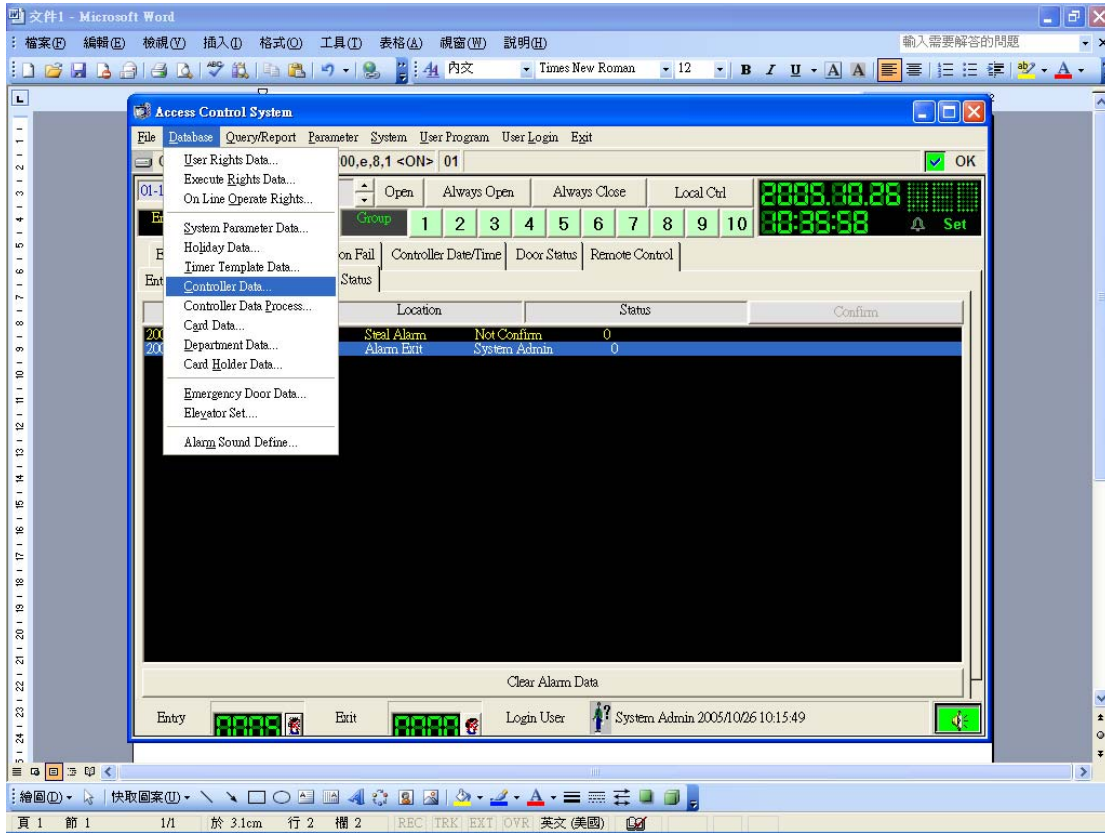
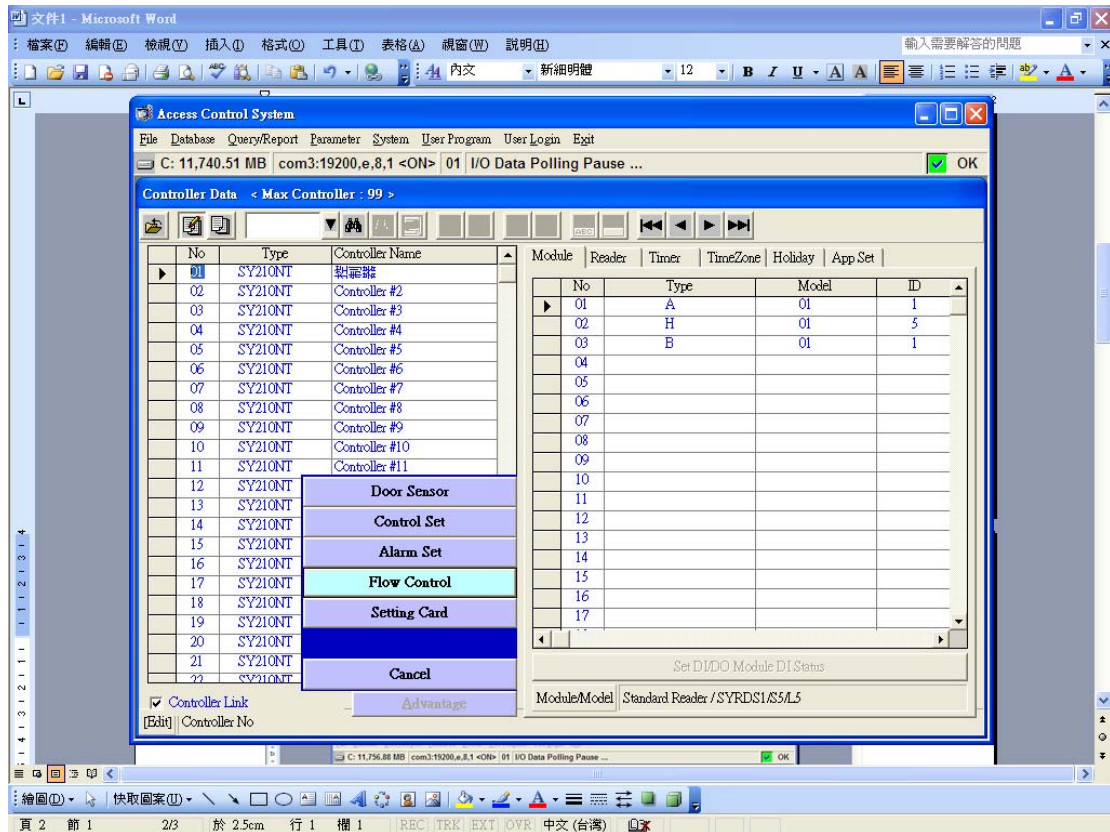


How to Setting Invalid card of Alarm Flow Chart

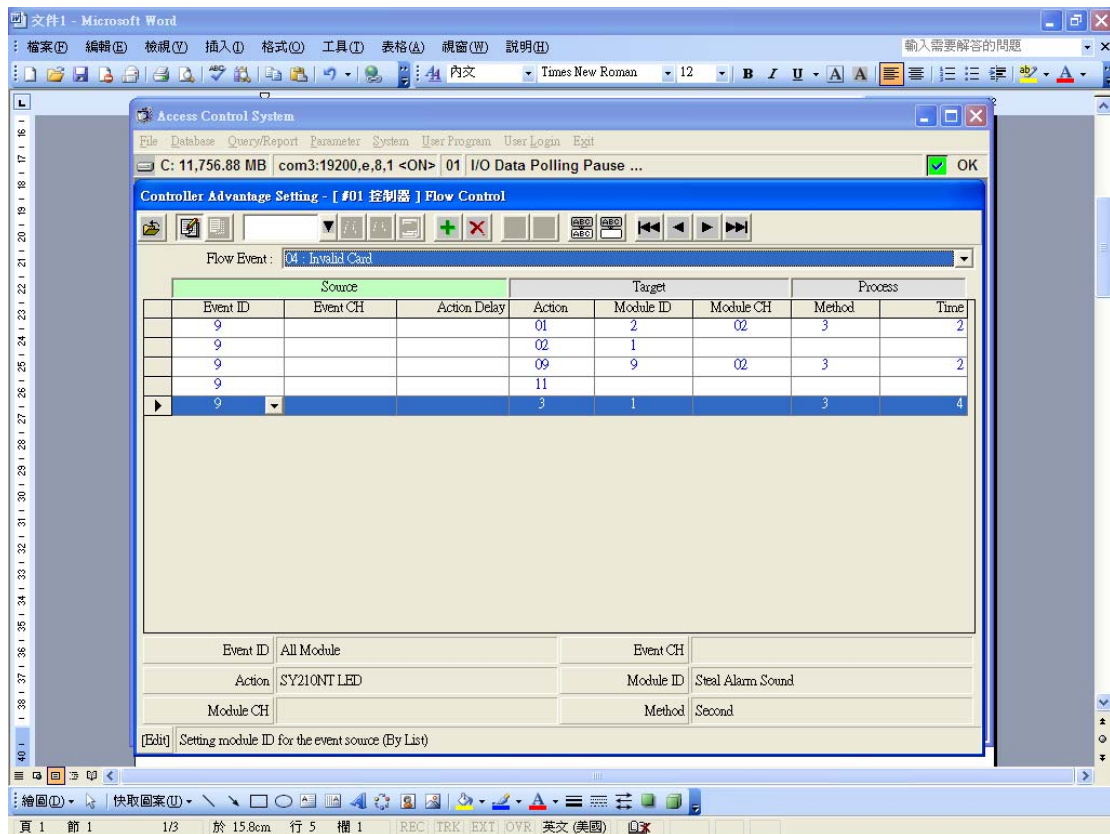
Select controller data into this item



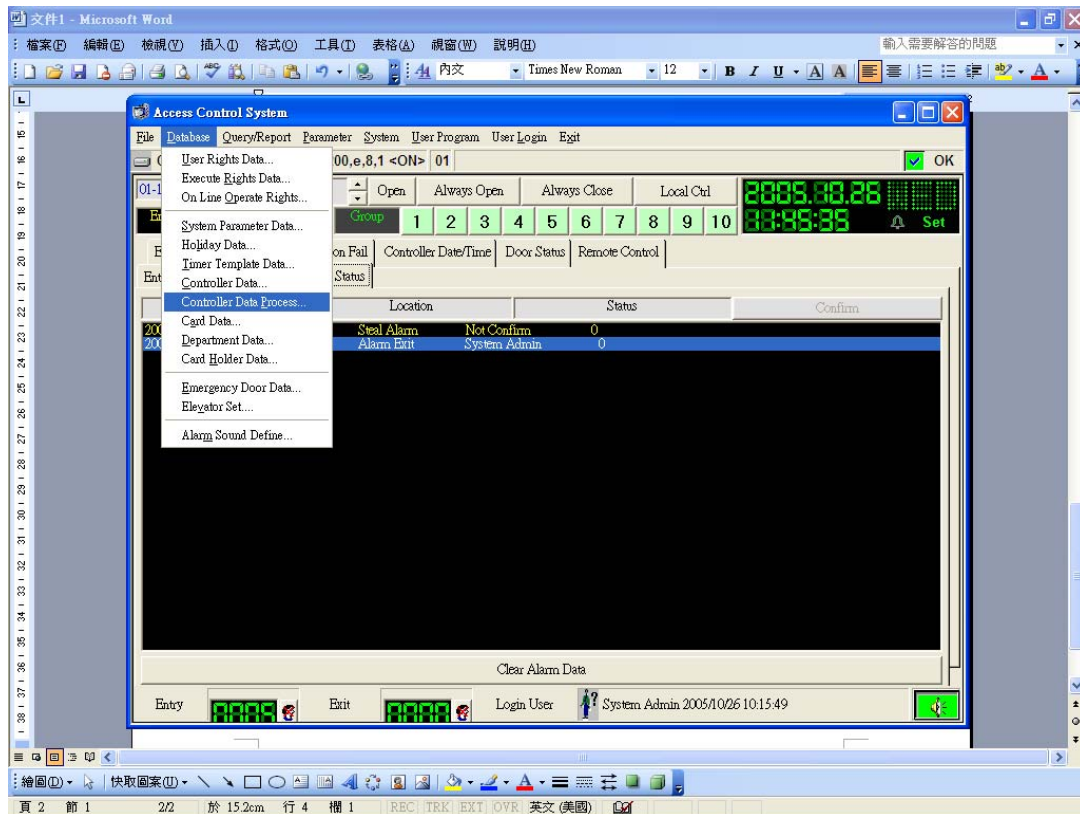
After that select “flow controller” login inside .
remember open the “control link” to enable



Setting a parameter in blue color item.



If setting ok ... anyway remember send “flow control” data to the controller
 Select “controller data process” into this item



Into this function “controller data process” select “seed to controller” . option “flow control” to enable after to press “ok”

