

SYFPM FingerPrint Management System Operation Manual

Version 1.1



CONTENTS

PROGRAM INSTALLATION 2

USES SYFPM MANAGE SYSTEM SOFTWARE. 6

MAIN SYSTEM PROCEDURE 7

 USER SET UP 8

 SYSTEM SET UP.....10

 ENROLL INPUT SET UP.....11

 SYRDF5 SET UP.....12

 LANGUAGE SET UP13

 FINGERPRINT READER SET UP14


 FINGERPRINT READER DEVICE.....15

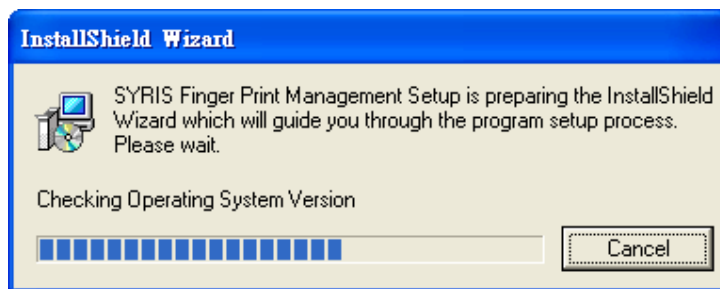
 PERSONNEL MANAGEMENT17

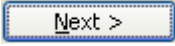
 FINGERPRINT MANAGEMENT19

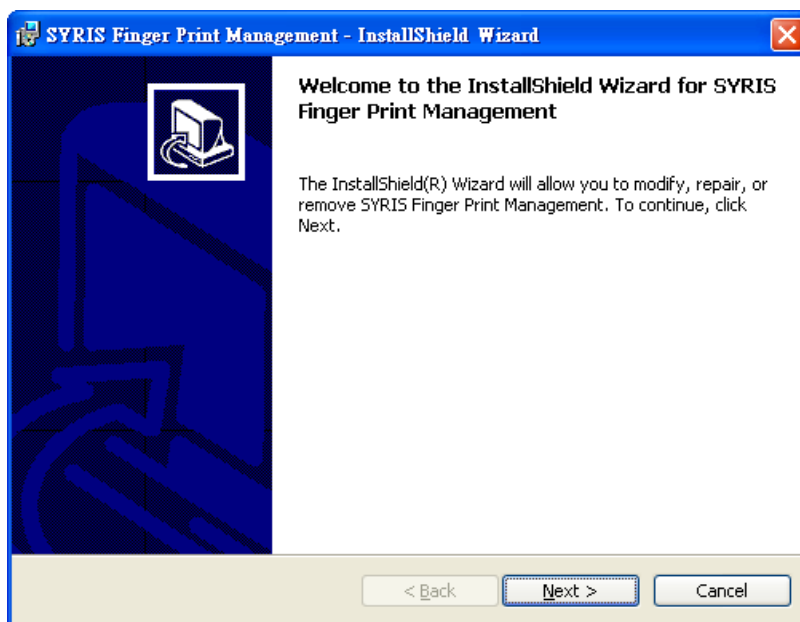
 FINGERPRINT TRANSMISSION.....26

Program installation

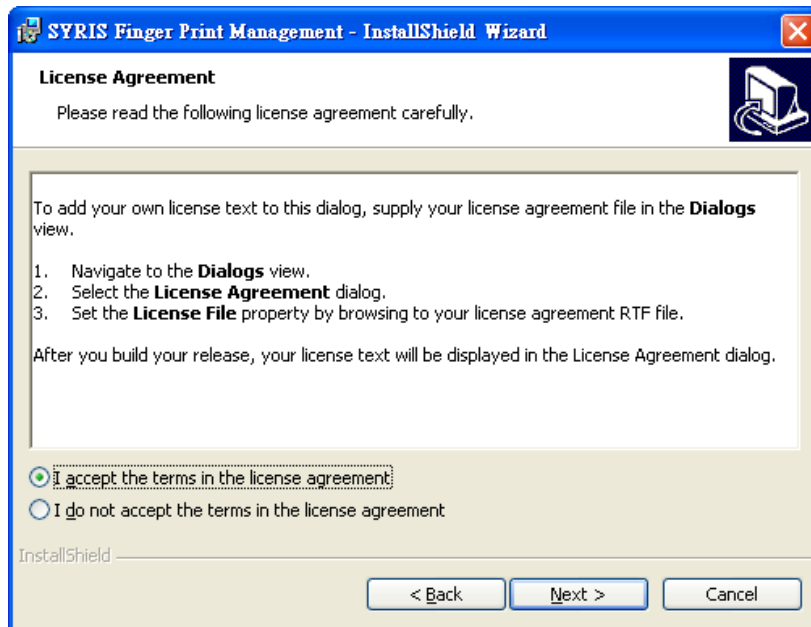
- **Software system demand**
 - CPU : Pentium II 350MHz or higher **【Pentium III , Pentium 4 is the best】**
 - RAM : 64MB or higher **【128MB, 256MB is the best 】**
 - Hard Disk : 40MB available space
 - CD-ROM : software installation
 - Operating system : Windows 95/98/2000/Me/XP
 - Database : MS-Access Database 、 MS-SQL Server or Linux MySQL Server
- **Step 1:Input disk in CD-ROM and after executing  will display prepare install screen as follows.**



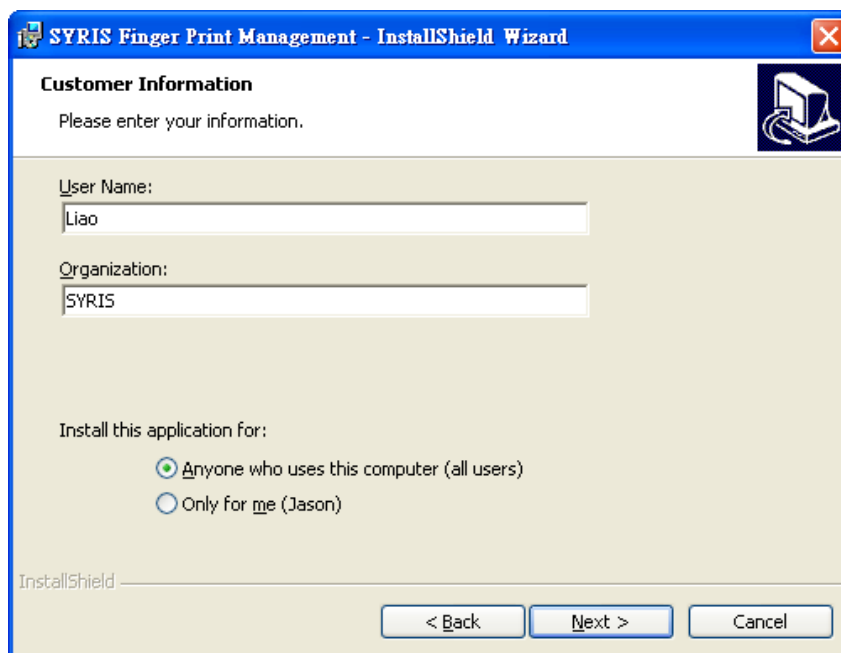
- **Step 2: system prepare install procedure complete, please click  to continue installation.**

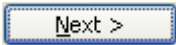



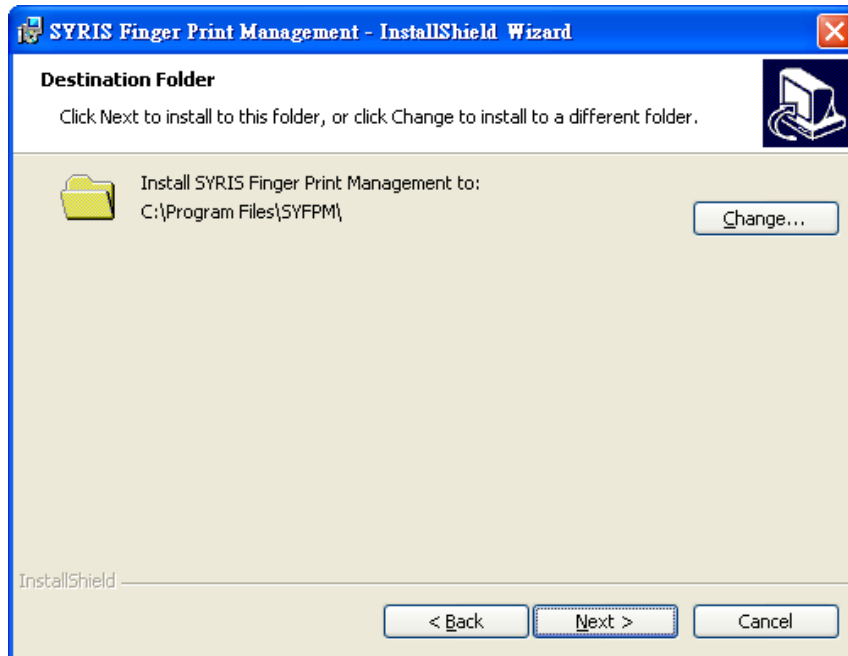
- **Step 3 :** The install program will display software using contract , read carefully and if agree the item of contract , please select I accept the terms in the license agreement and click to continue installation.

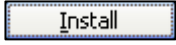


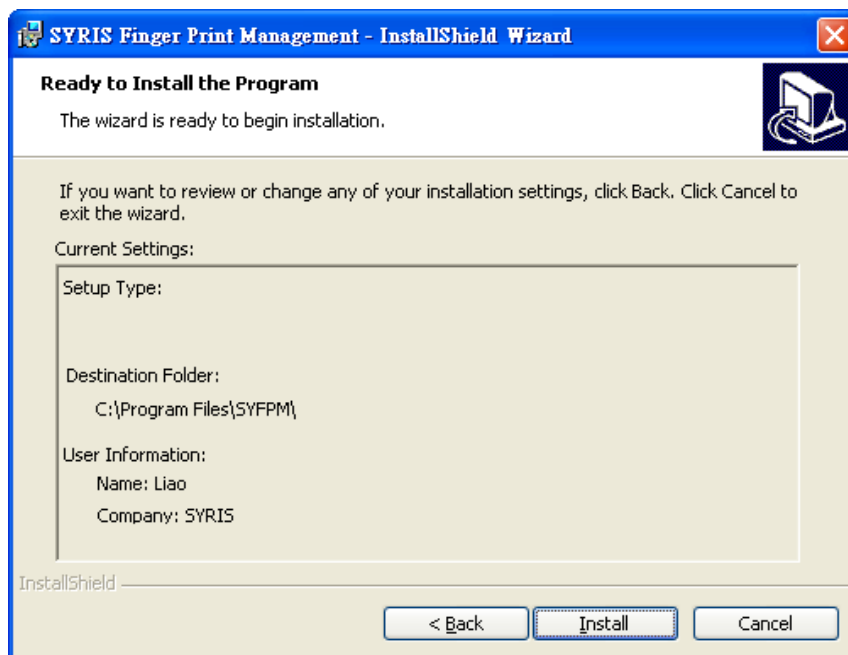
- **Step 4:** Please enter user name, organization **【company】** name and select the type of install program, can choose install for all user of the computer or only for insall programmer.



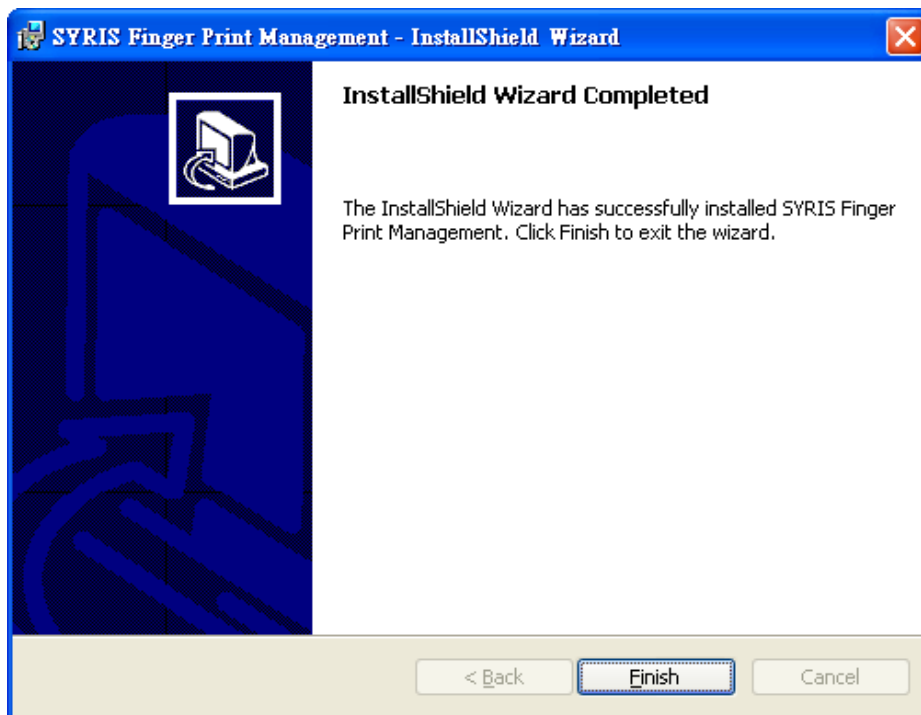
- **Step 5: Allocate the contents of install program. If want to install in the system preset contents 【C:\Program Files\SYFPM】 , click  , and if want to install in different location, can use  to select the path.**



- **Step 6: The install program will display the install contents, user information. Please check the displayed contents and after confirm, select  to start system installation.**



- **Step 7: The system has successfully install procedure, please select to complete installation.**



Uses SYFPM manage system software.

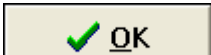
Software purpose: Fingerprints manage system is for user can easily set up fingerprint and fingerprint reader of personnel by use the operation convenience of software

To execute SYFPM manage system: select  \  Programs \  SYRIS Finger Print Management

To open fingerprint manage system.

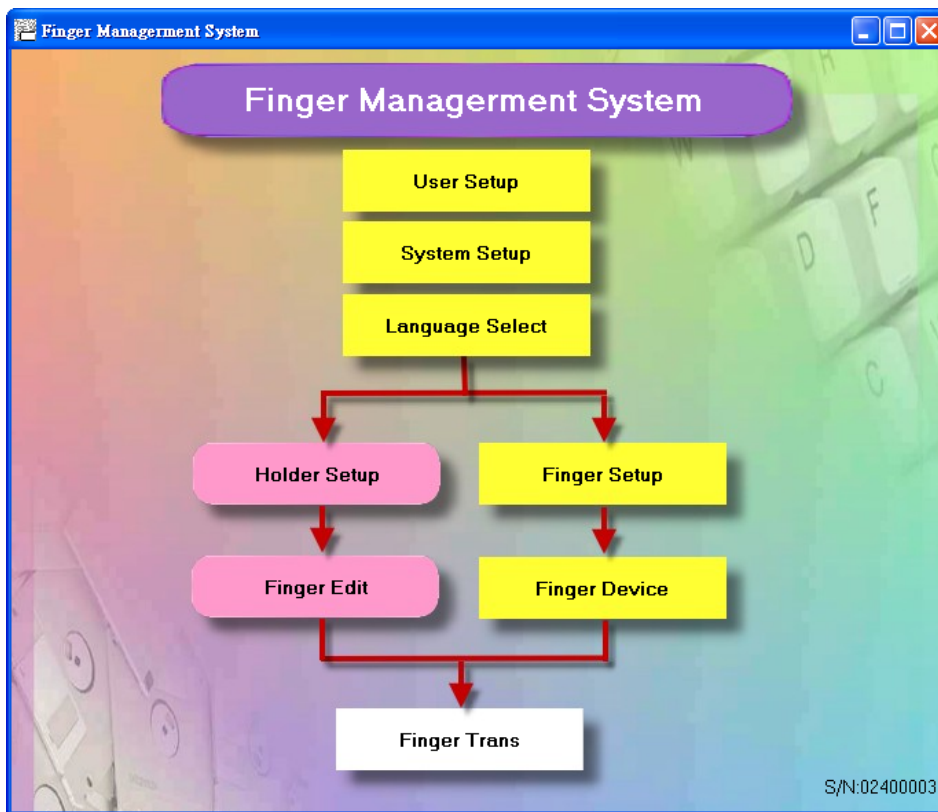


System login screen

Enter the user ID **【identify number】** and password, at the first ime installation complete, the system will preset the ID as **admin**, and preset a blank space at password. The user only needs to click  to login.

If want to add, modify or delete the user ID or user password, the user can refer the introduction of [User Set Up](#) to modify by the described steps.

Main System Procedure



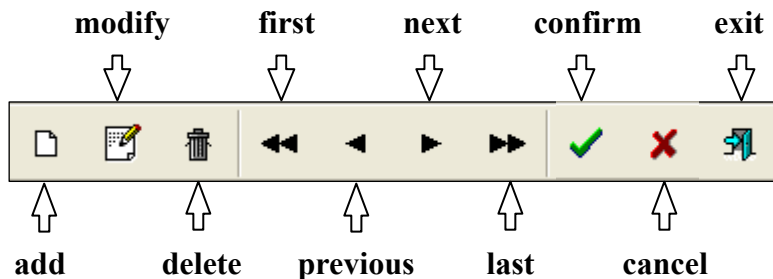
Fingerprint manage system main screen

Systems mainly set up function are: user set up, system set up and language set up. The fingerprint management separate into fingerprint reader set up and fingerprint reader device. The database management separate into personnel management and fingerprint management. After set up above can proceed fingerprint transmission.

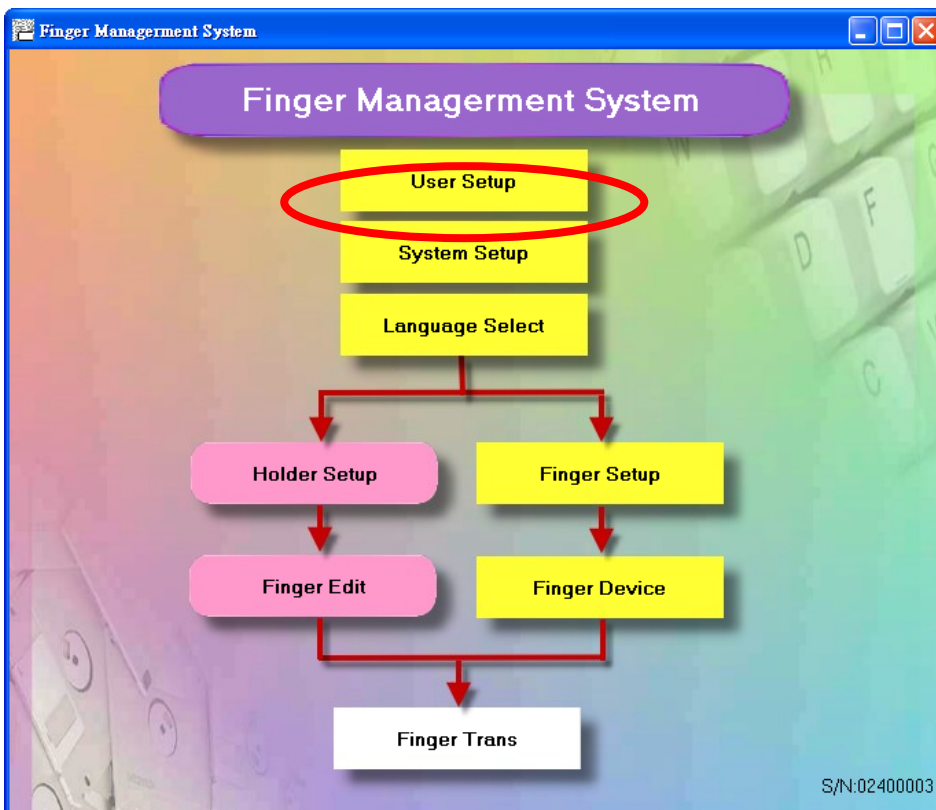
As the main screen procedure, the sequence is:

User set up→system set up→language set up→fingerprint reader set up→fingerprint reader device→personnel management→fingerprint management→fingerprint transmission.

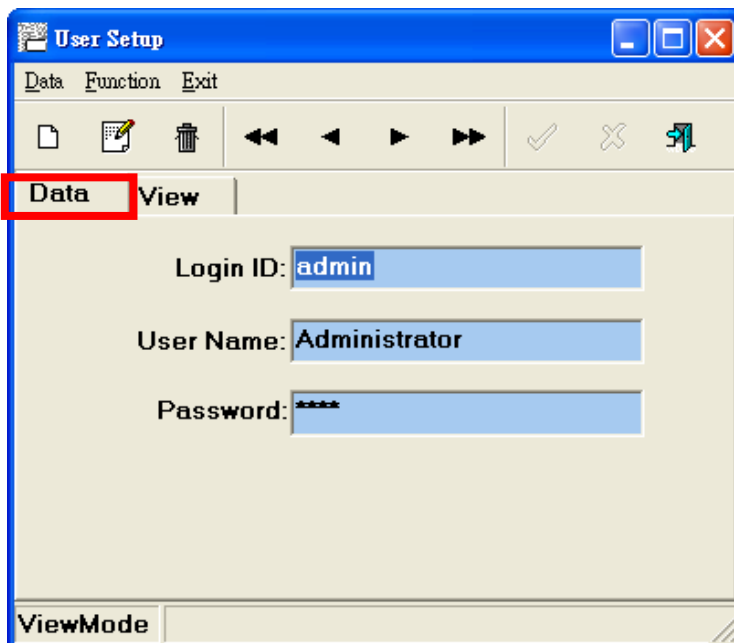
Operating tool bar introduction:



User Set Up

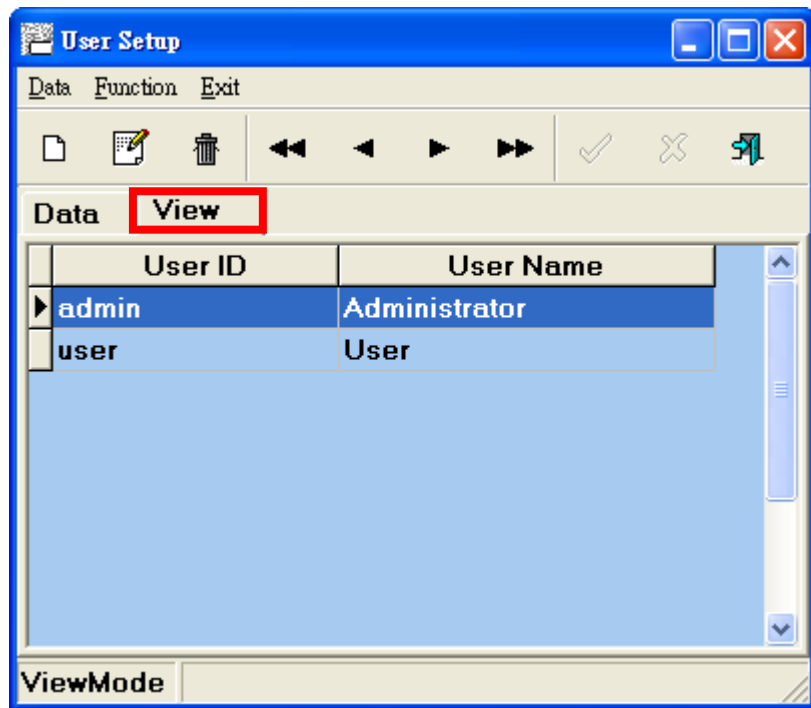


Main system flow chart

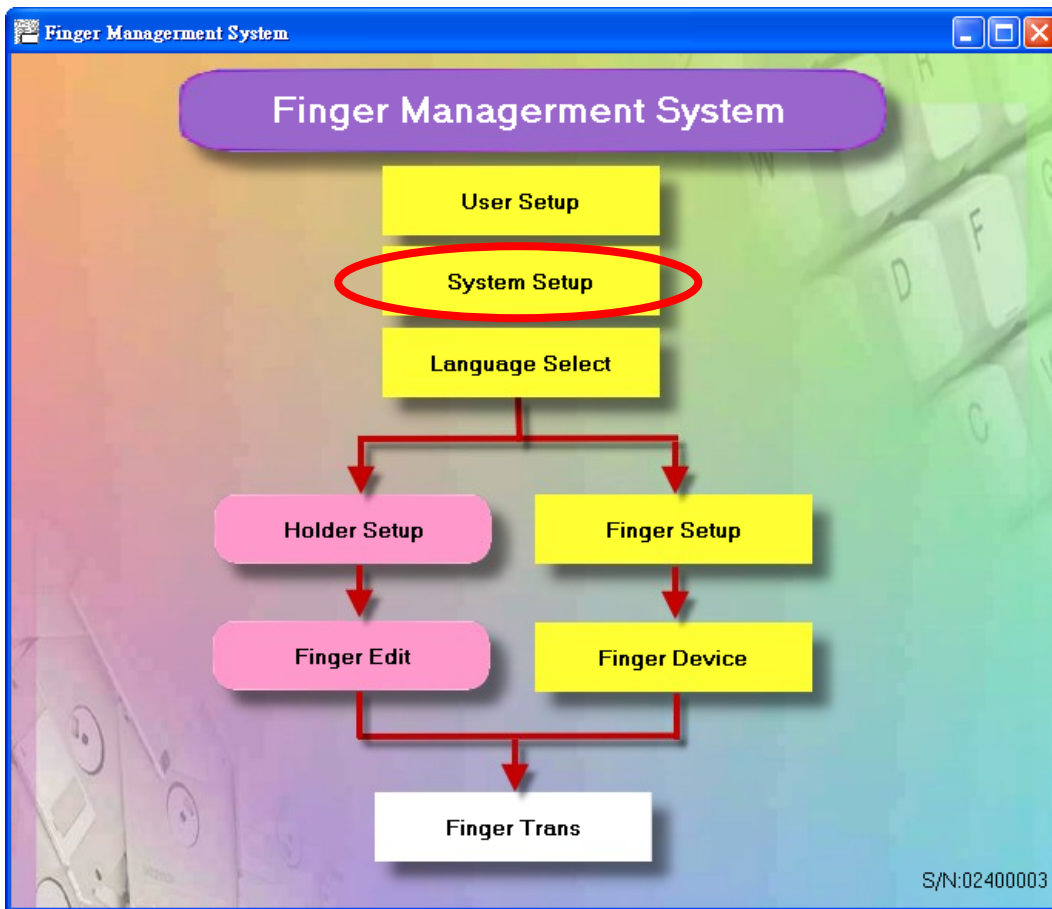


The purpose is to manage the operators of whole system, and give operators an ID and password. If enter blank in password, it will automatically login at second time instead of login screen.

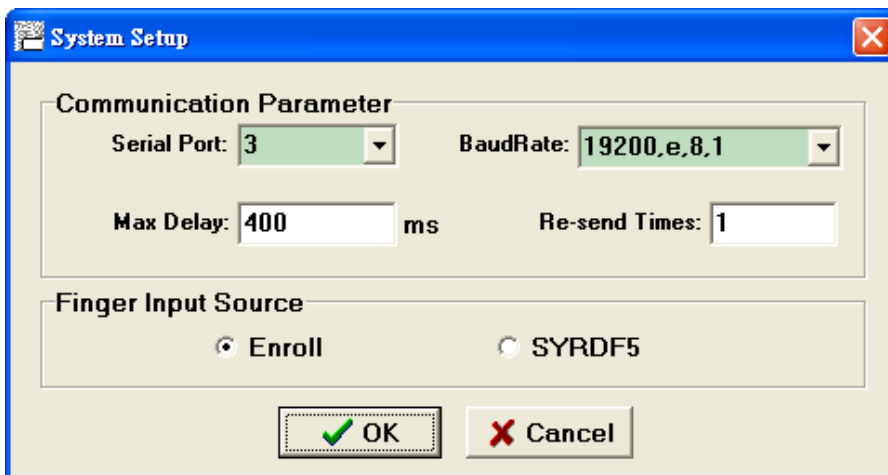
Switch to data surf page, the screen will display the user ID and user name.



System Set Up



Main system flow chart




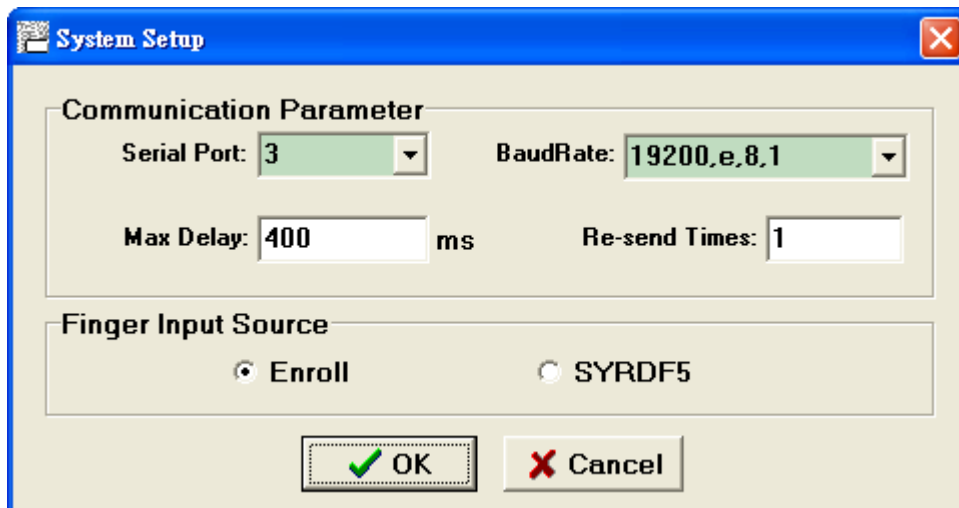
System set up screen


Communication argument: Set SYLink or the Com port of fingerprint reader and baudrate.

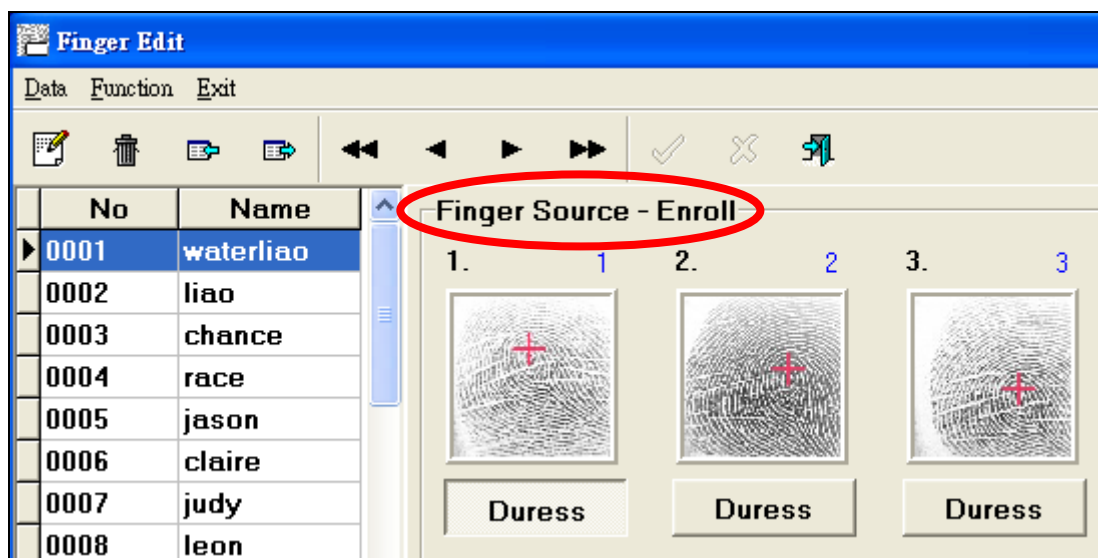
Input fingerprint source: When getting fingerprint in fingerprint management, the user can choose desktop fingerprint Enroll or SYRDF5 to input fingerprint.

Enroll Input Set Up


After modify the parameters of communication argument, select Enroll which in the option of fingerprint input source, click .

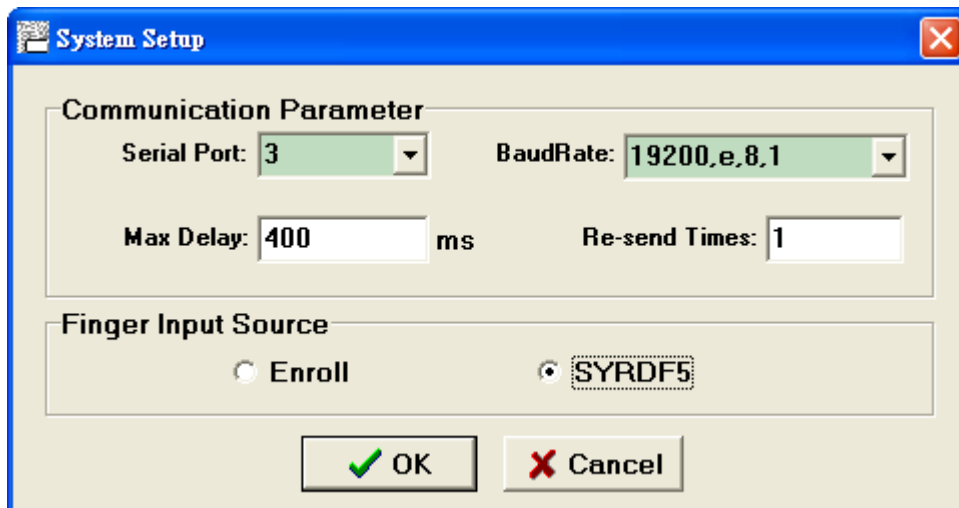




Direct start  to process fingerprint record and edit action, please refer [TFingerprint Management](#) for the detail operation.



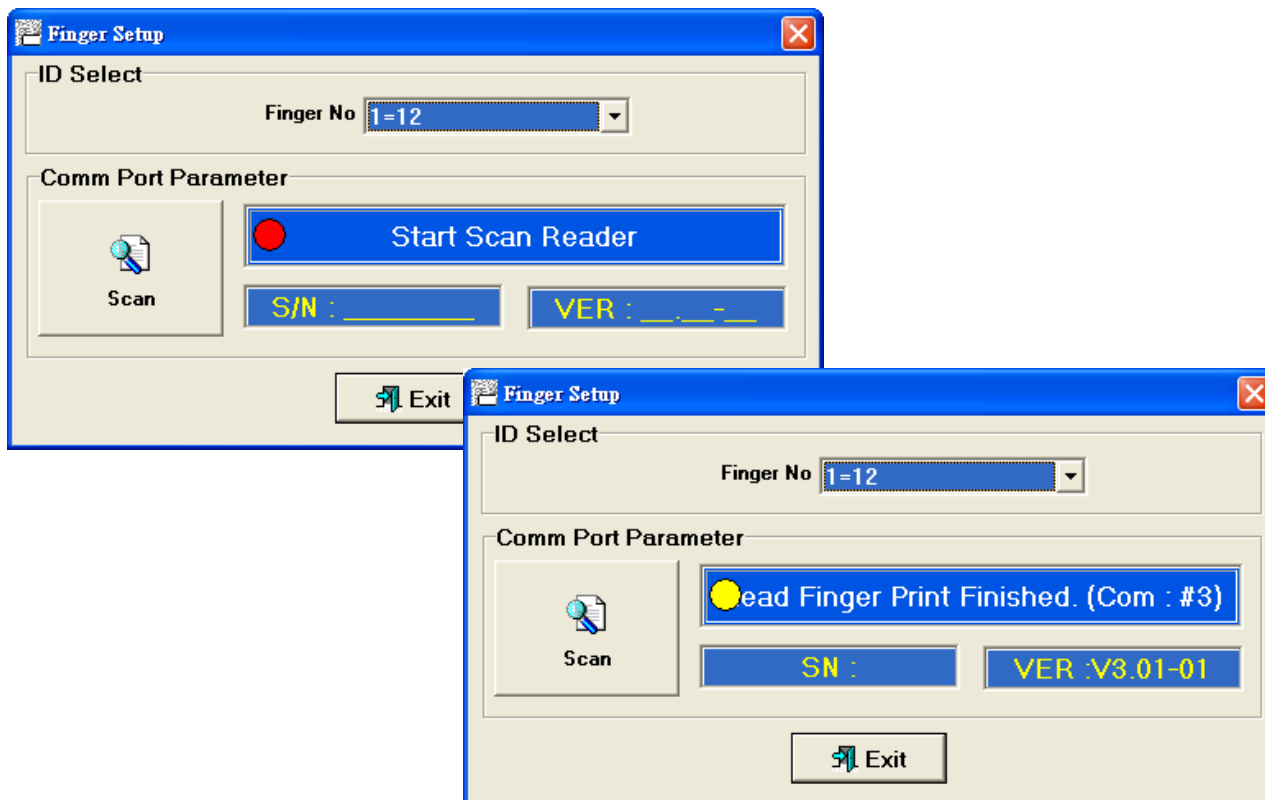
SYRDF5 Set Up

After modify the parameters of communication argument, select SYRDF5 which in the option of fingerprint input source and click .

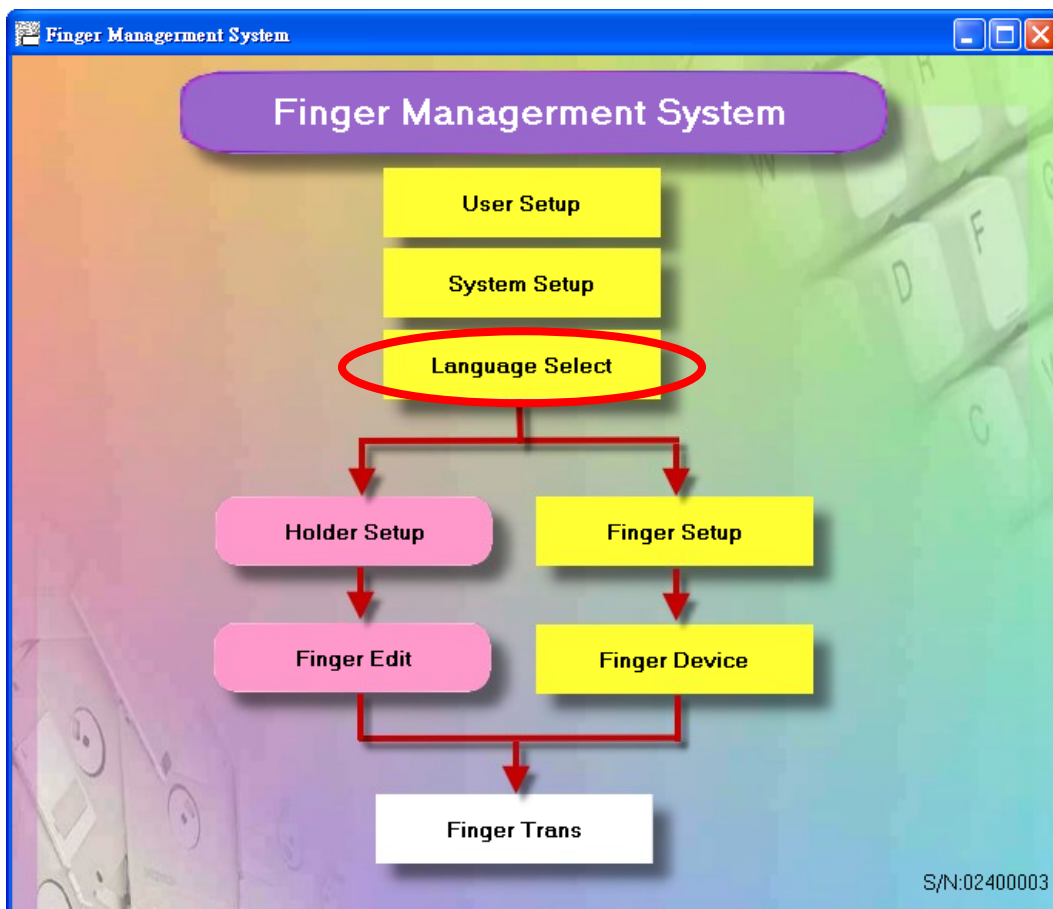


Click  to open the fingerprint set up window, after select fingerprint reader sequent number, click “scan controller button”, if display  Finger Print Disconnect

It means the system success connect with fingerprint device, and if didn't success on-line, it will display  ead Finger Print Finished. (Com : #3) , please re-check the device connection.




Language Set Up

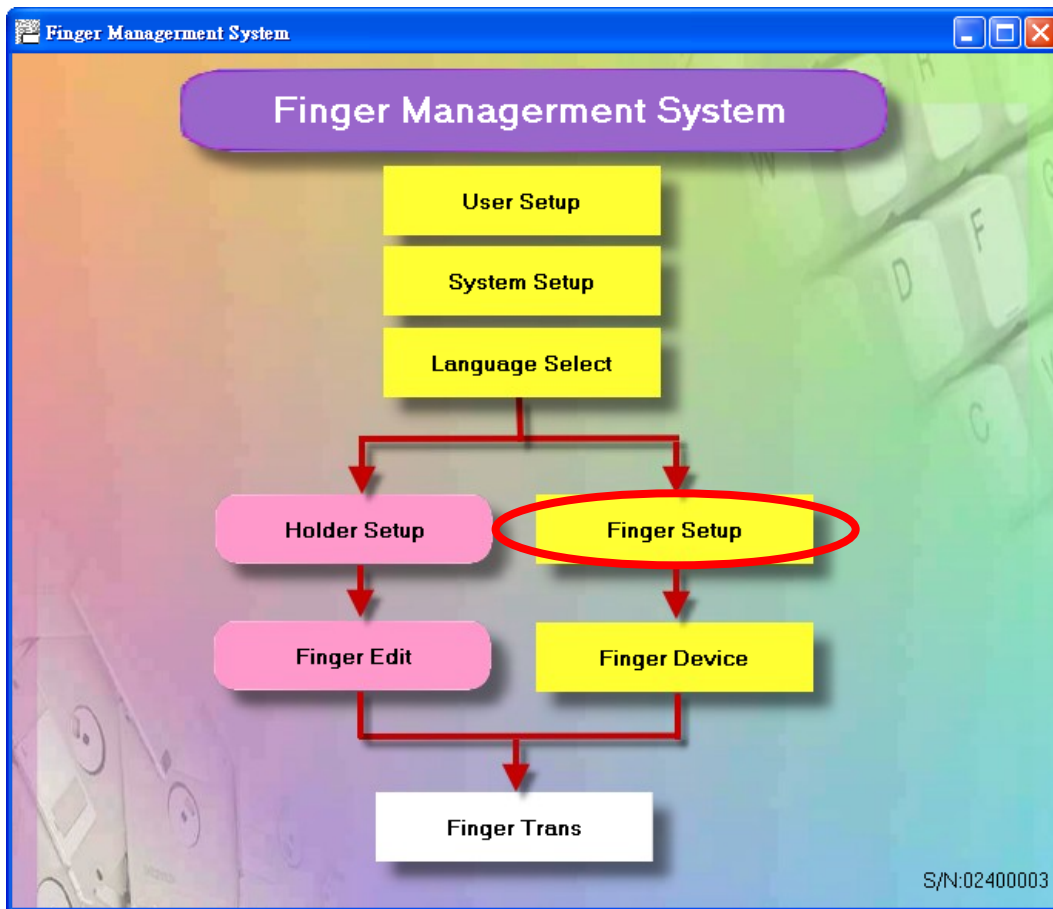


Main system flow chart

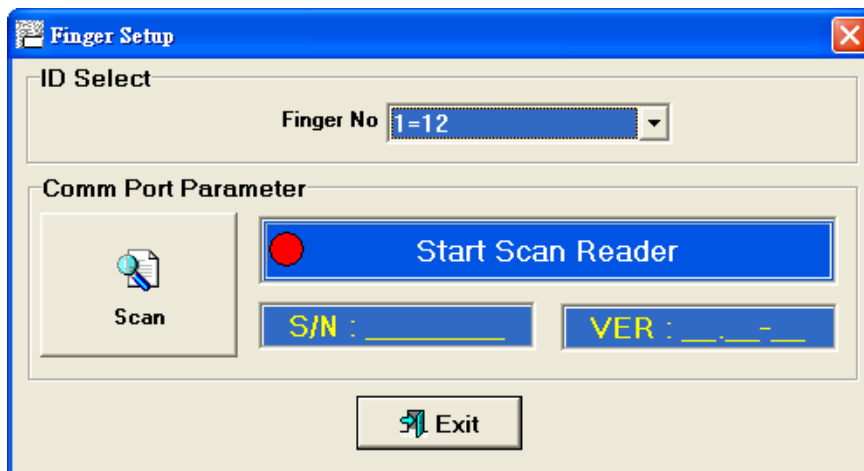


The system supply four languages as screen displayed: Simplified Chinese, Traditional Chinese, English and User Define. The below side shows the language of present system, please direct select the language and click  .

Fingerprint Reader Set Up



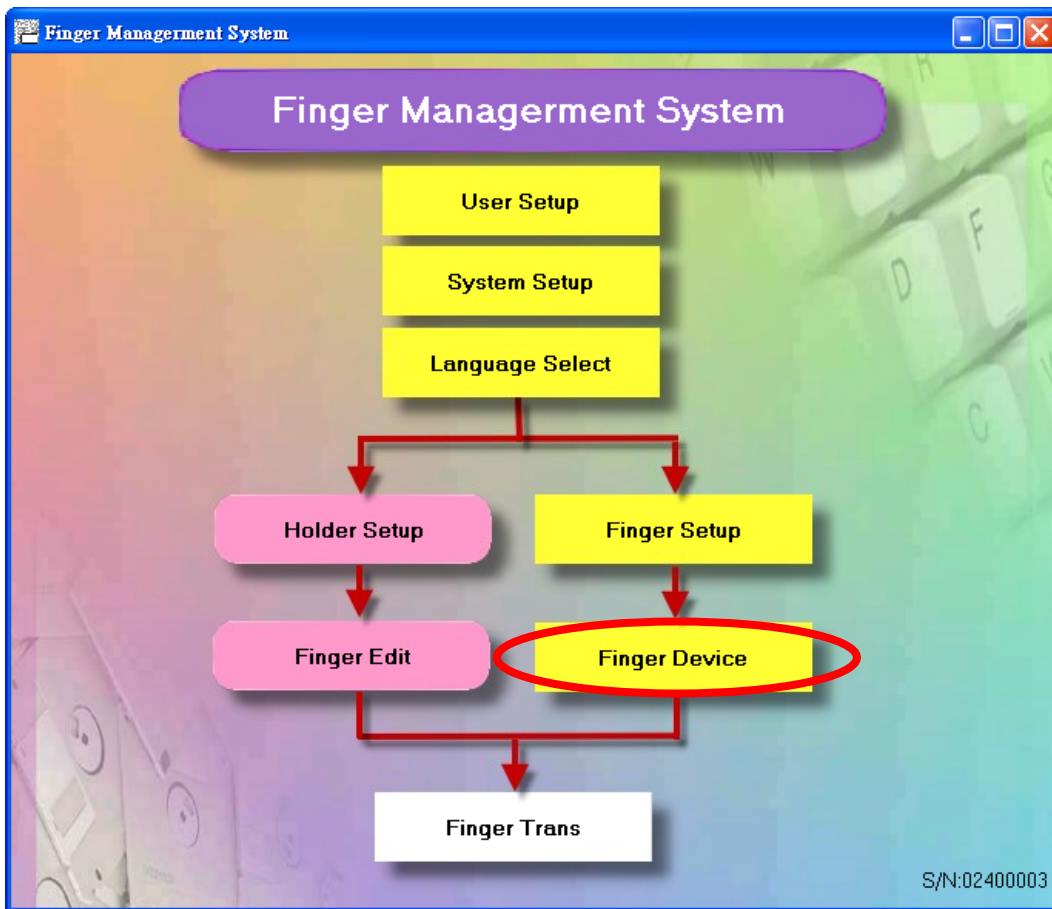
Main system flow chart



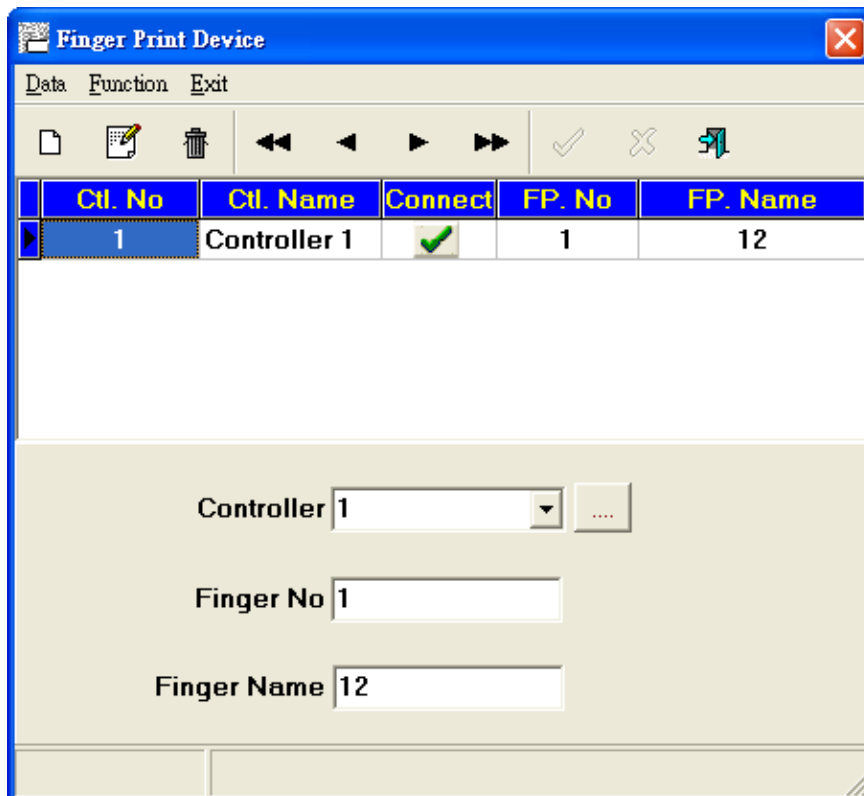
Set up the communication argument of fingerprint reader and confirm the fingerprint readerID, select “scan controller button” and the system will automatically detect the port location, baudrate and working mode...etc. related information.

The preset baudrate: 19200, e, 8, 1 Working mode: RS485 24 bits

Fingerprint Reader Device



Main system flow chart



Add data amount with the fingerprint reader amount, if the fingerprint reader is **direct communicate with computer and without through controller, therefore, the controller sequent number has to choose controller 0** , then confirm the fingerprint reader sequent number and marks communication argument to communicate.

If the fingerprint reader communicate computer through controller, after select controller, the others steps are the same with above.

When selecting controller, user can also edit by the edit function above if want to add controller or edit r elated data.

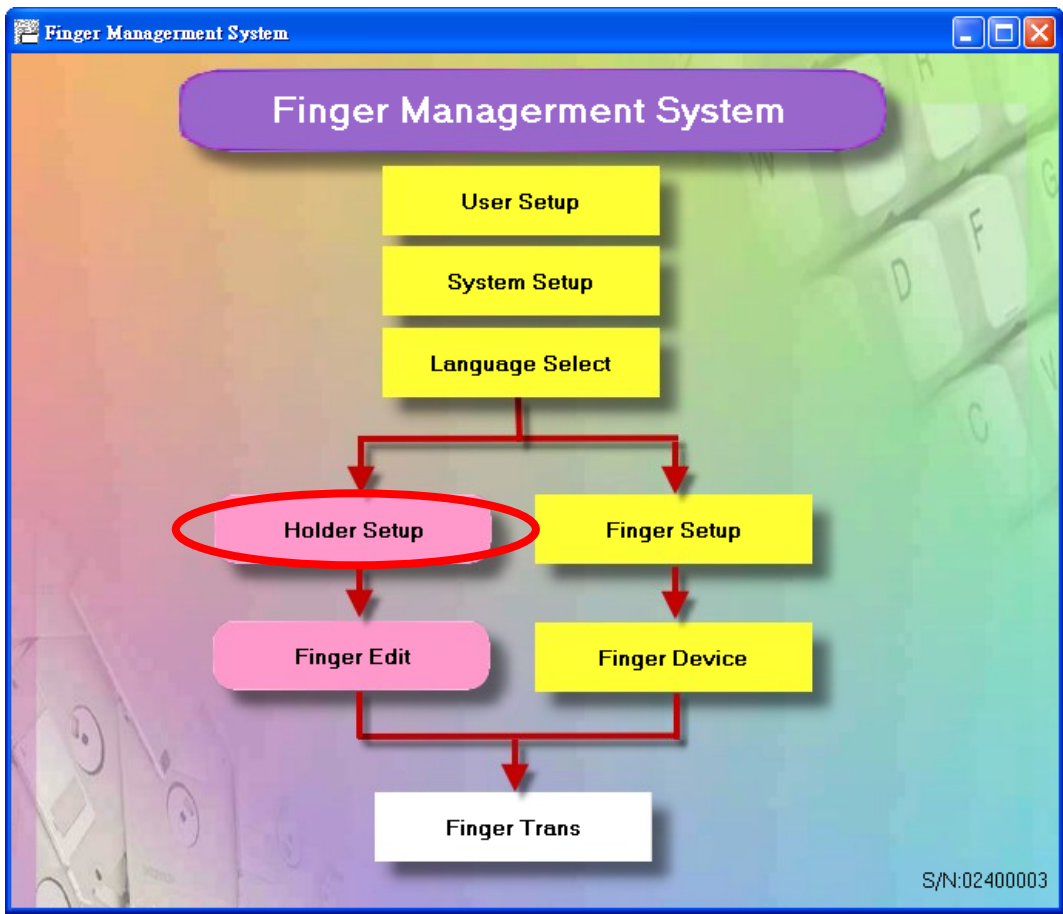
The fingerprint reader sequent number is the fingerprint ID, it has be the same with fingerprint reader number to communicate, and it can be modified at “fingerprint set ID” argument.

The fingerprint name can be defined by user, such as: vault fingerprint reader, warehouse...etc.

The sequent number 0 controller is for computer direct communicate with fingerprint reader, other sequent number depend on the controller ID, it won't be able to communicate if set up error.

The name can be defined by user, such as: third floor controller.

Personnel Management



Main system flow chart



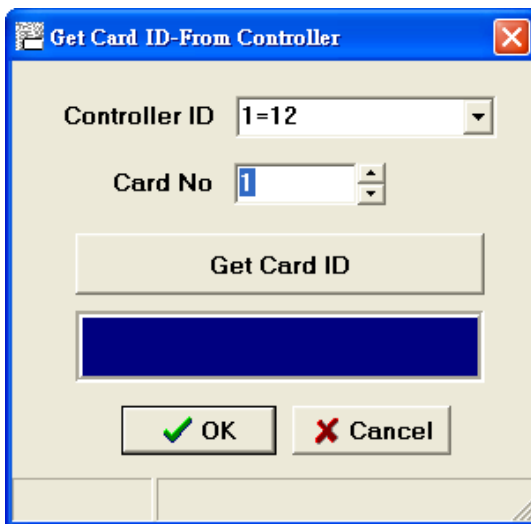
Before allotting fingerprint has to edit personnel data complete to select personnel proceed fingerprint allotment. Need to be careful the sequent number can not repeat.

Card internal code: each fingerprint in controller **【if communicate through controller】** is using ascard to attend the function of 9999 fingerprints. Therefore, after set up card internal

code at personnel argument, when setting fingerprint, the system will immediately match the card internal code of personnel with the set fingerprint.

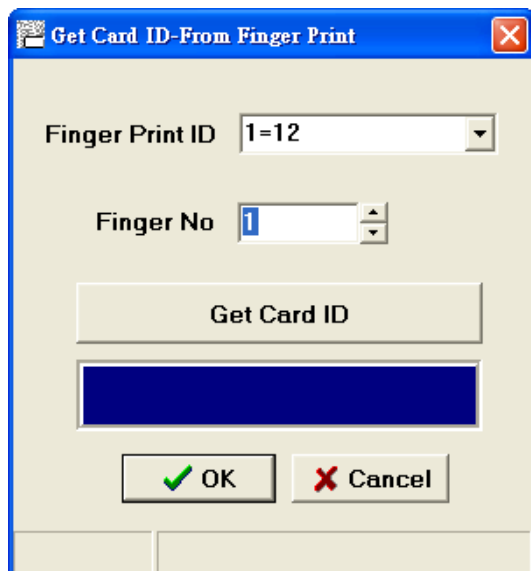
There are three ways to get card internal code:

1. Input directly **【under the situation of knew card internal code】** .
2. Get card internal code form controller.



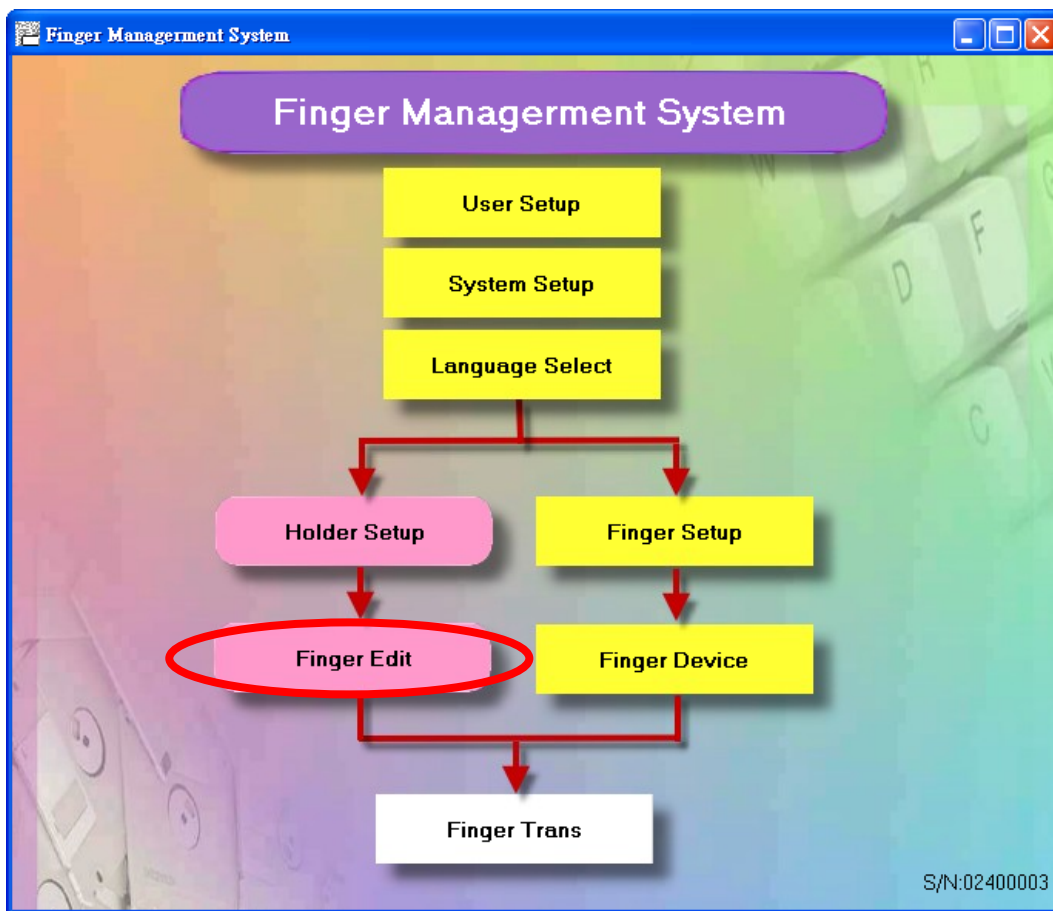
Can select controller ID and card number and click get card ID if don't know card internal code. Click "confirm" to accept the card ID.

3. Get internal code form fingerprint reader

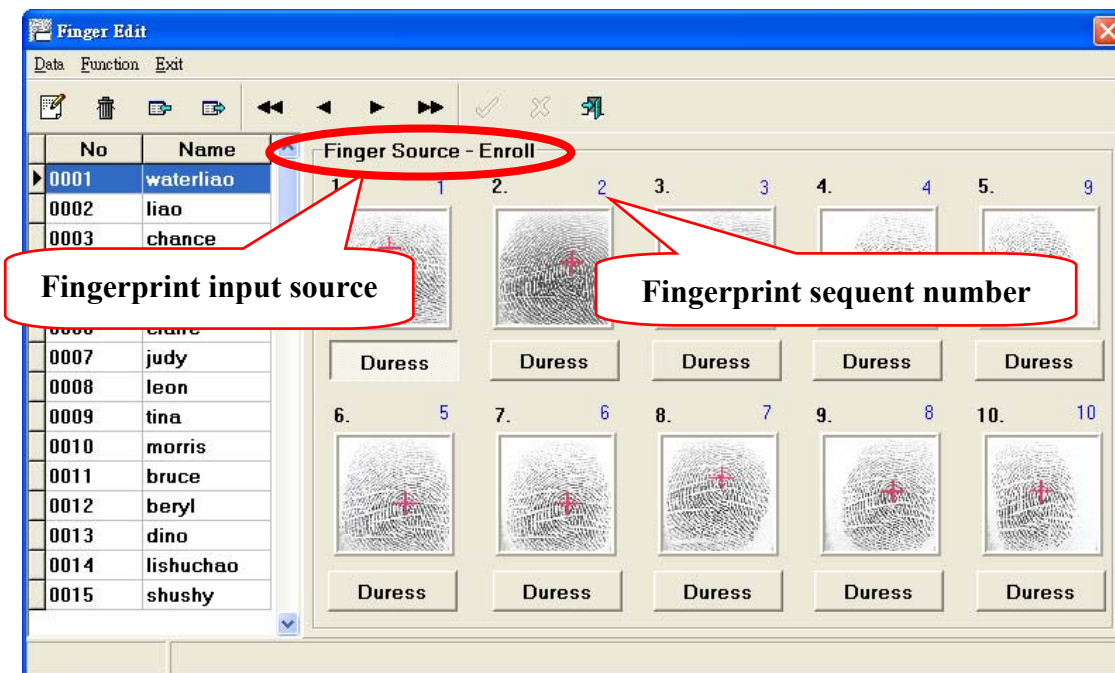


If didn't communicate thourgh controller, can get card ID directly form fingerprint reader.


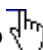
Fingerprint Management

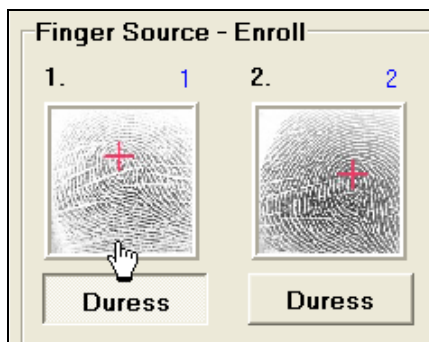


Main system flow chart




When set up personnel data at “personnel management” argument, it will list all personnel at left side and the input fingerprint at right side, every person can have ten fingerprints at top.

Click  to turn system into fingerprint edit mode if want to add or modify, and move the cursor into fingerprint input area, the cursor will turn to  shape, click to proceed add or modify action.

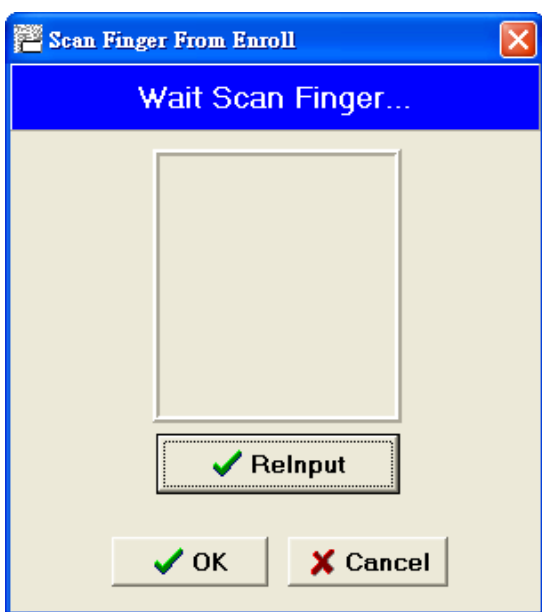


The fingerprint input sources decide how to get fingerprint data, it can be decide at “system set up” argument. There are two way to get fingerprint: A. Enroll desktop fingerprint scan device, B. get fingerprint from fingerprint reader **【SYRDF5】** , the detail operating steps as follow:

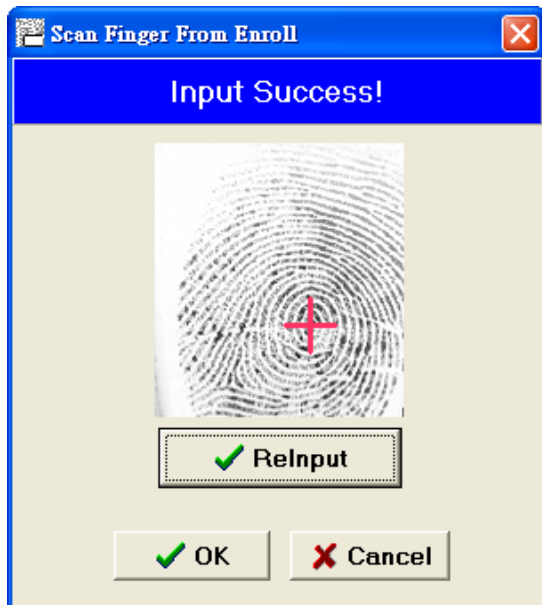
A. Enroll desktop fingerprint scan device

Move cursor to “fingerprint input area” and the cursor will turn to  shape, click once the system will display the input window of scan fingerprint **【picture one】** and display **Wait Scan Finger...**

Enroll desktop fingerprint scan device will flash red light, please press fingerprint on the cold frame, and if press correctly and not overtake the scanning range, the system scan window will display the message of **Input Success!** as **【picture two】** .

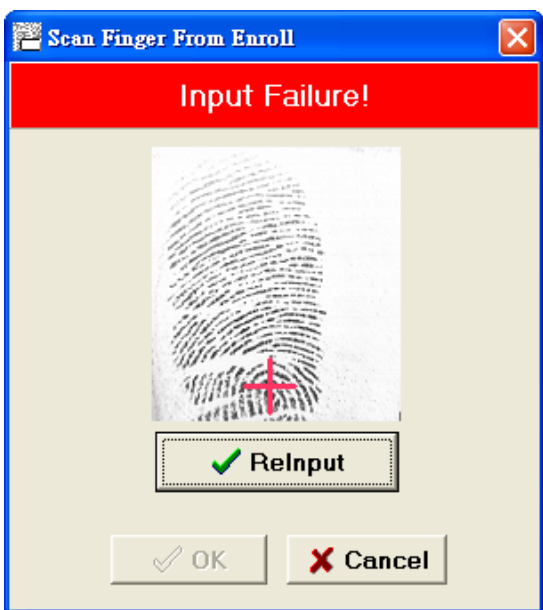


Picture one

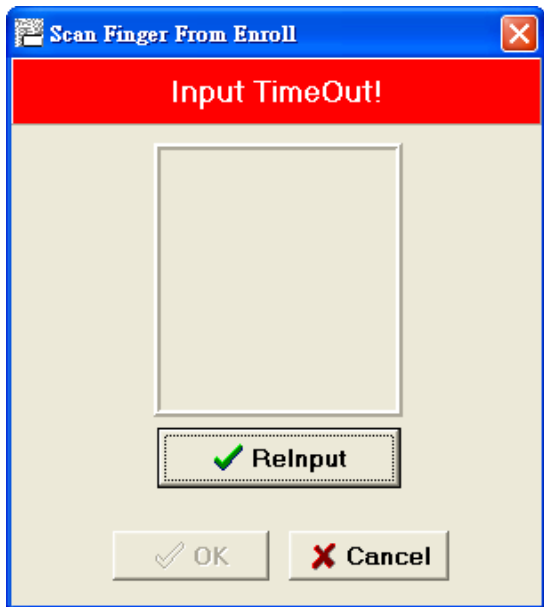


Picture two

If didn't press finger in the effect range, it will display **Input Failure!** message as **picture three** , the user only need to click **ReInput** to record the fingerprint again. And if didn't press fingerprint on the controller over setting time, it will display the error message of **Input TimeOut!** as **picture four** .



Picture third



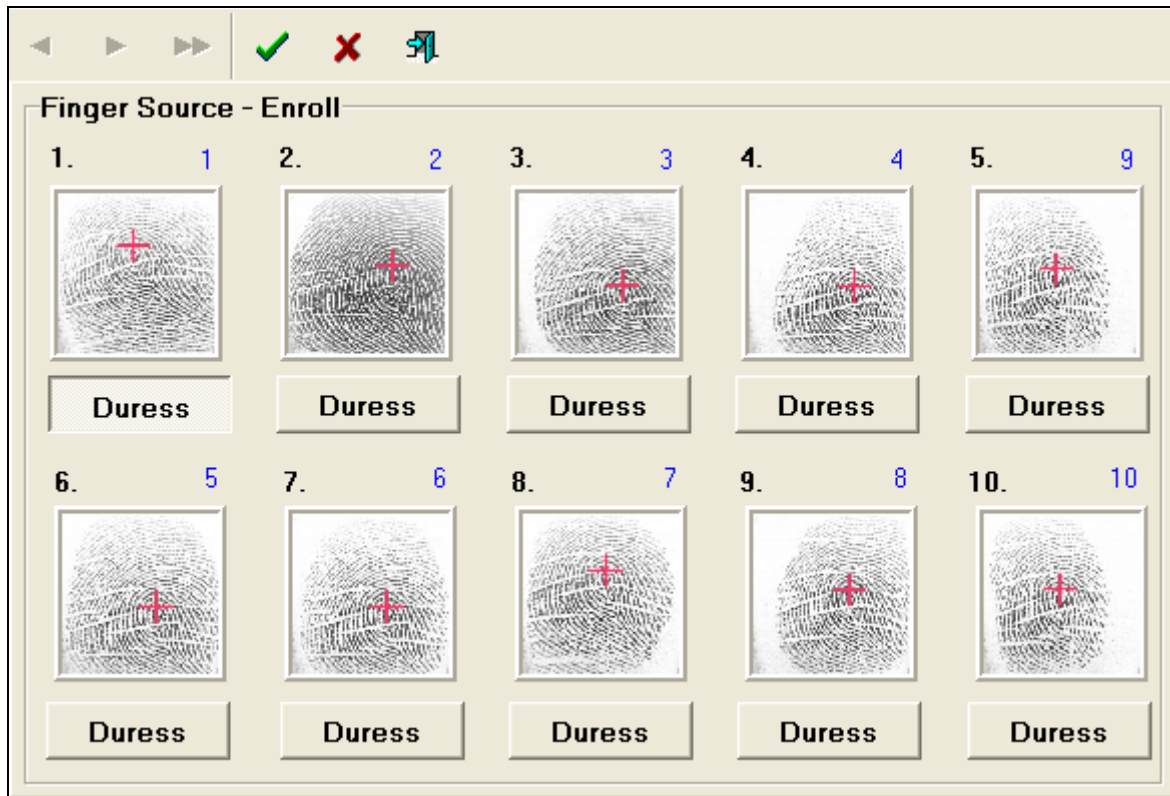
Picture fourth

Click **OK** then back to fingerprint management screen, the system will display the input fingerprint and automatically dispose a fingerprint sequent number for the fingerprint. This sequent number can use to manage personnel → get card ID → get card ID from SYRDF5 fingerprint reader.


IF want to set the fingerprint to anti-forced fingerprint, the user only need to click .

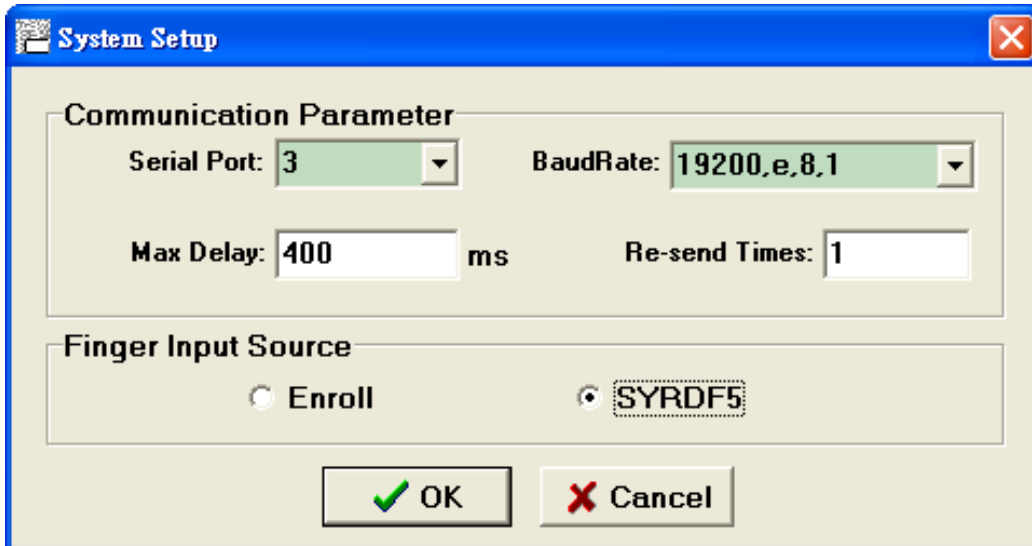
When the fingerprint reader accepts this fingerprint, the reader will produce alarm immediately.

After complete the above steps, please click to store fingerprint data into database.




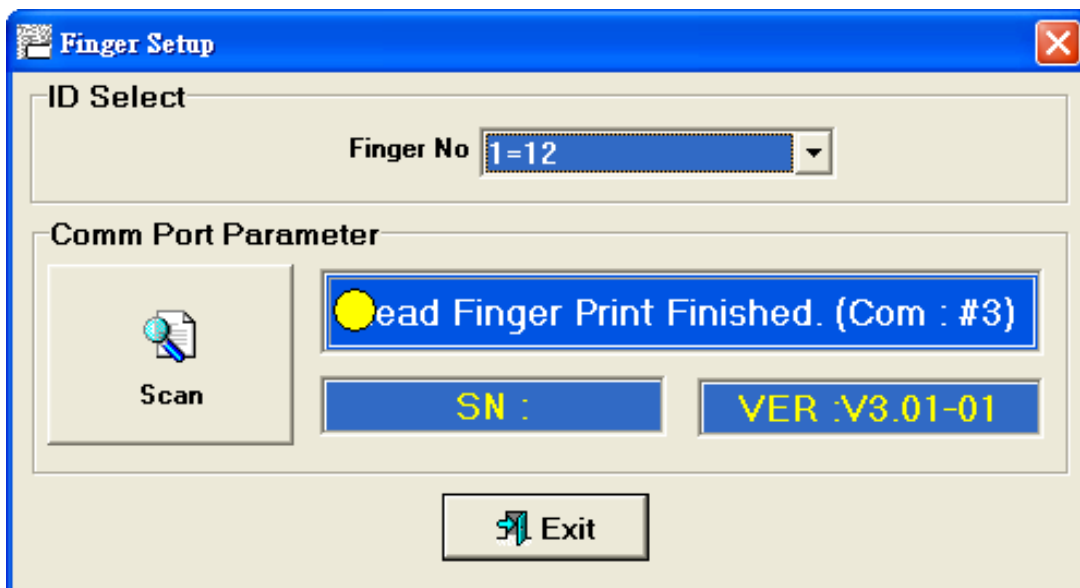
B. Get fingerprint from SYRDF5 fingerprint reader:

In the system setting screen, set the fingerprint input source to SYRDF5 and click  to store setting.

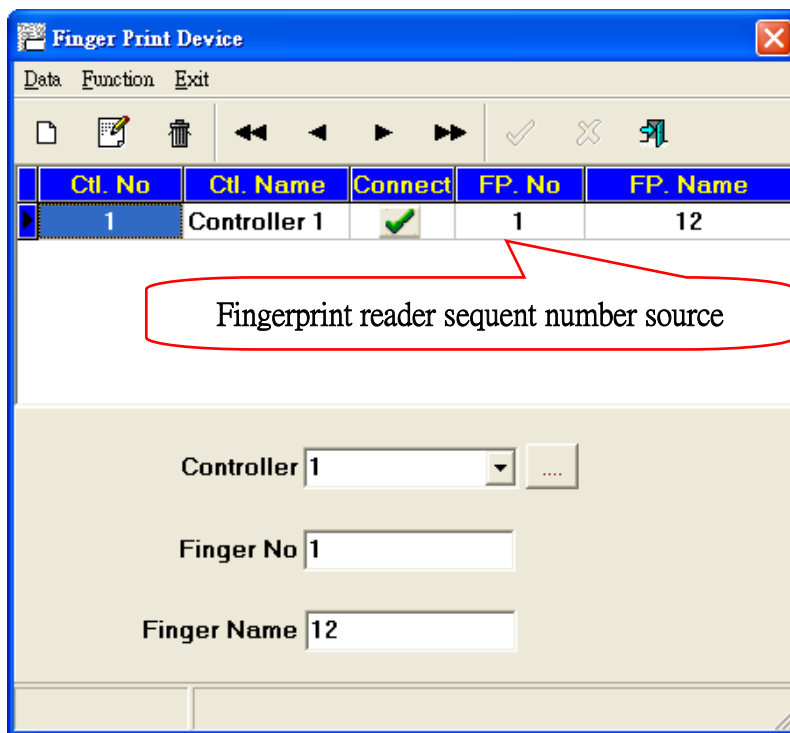


Click  to open fingerprint reader setting window; select fingerprint reader sequent number and click "scan controller button", if display ead Finger Print Finished. (Com : #3)

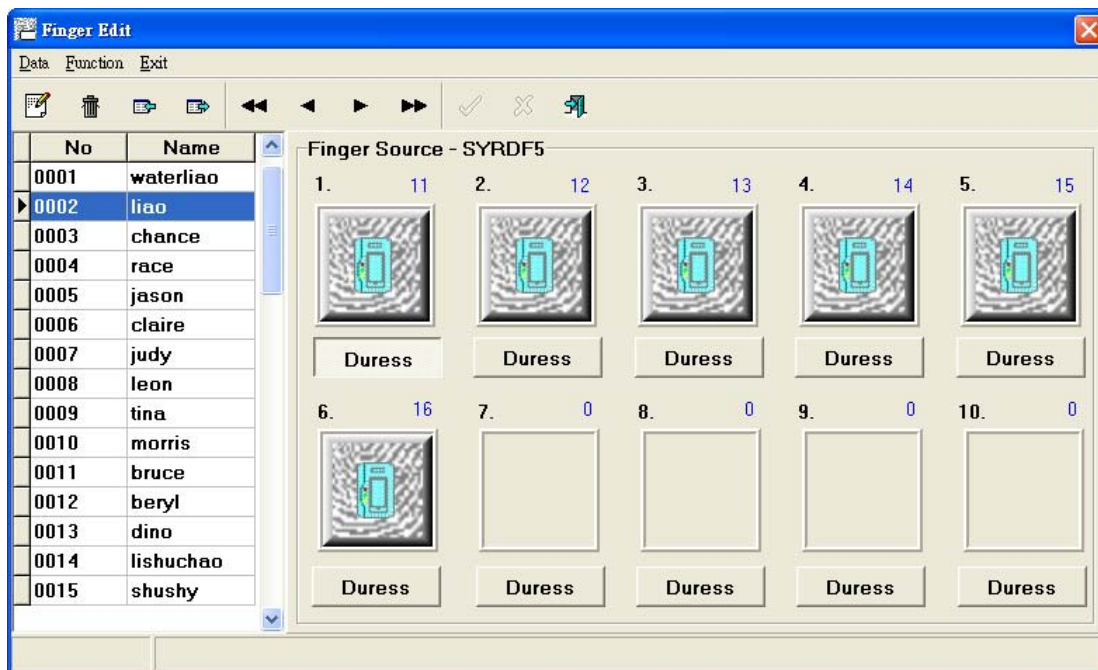
It means the communication success between system and fingerprint device, and if not complete communication, it will display  Finger Print Disconnect, please check the device connection status.



At this time can from fingerprint reader sequent number **【ID】** , the ID source is set from the fingerprint device argument and in the on-line status **【marks on on-line column】** ; The fingerprint sequent number is the blue text in edit argument, confirm these two sequent numbers and click “confirm” button to feedback the fingerprint data from SYRDF finerprint reader to fingerprint database. And right now the picture will turn to the picture of fingerprint reader but not fingerprint picture, it mean the fingerprint data is pass from fingerprint reader, after confirm click “store” button to storage.

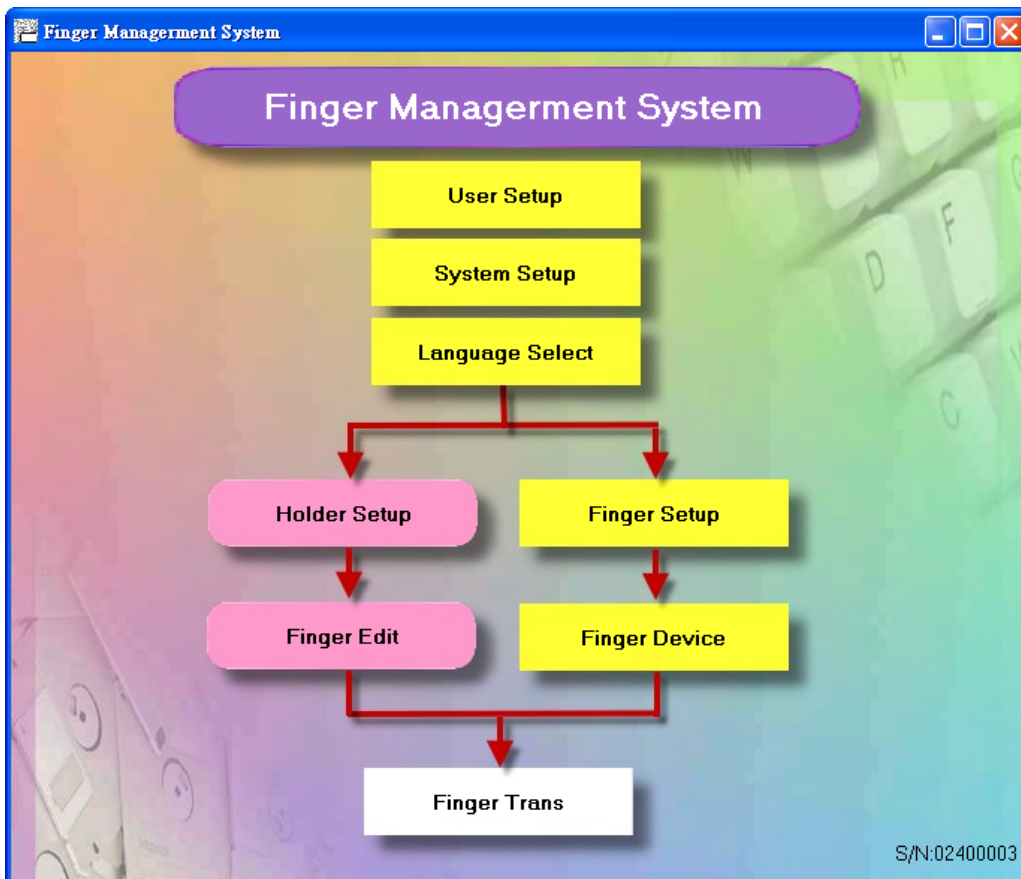


The fingerprint input way is the same with the Enroll desktop fingerprint scan device record way, only proceed fingerprint record action on the different device.

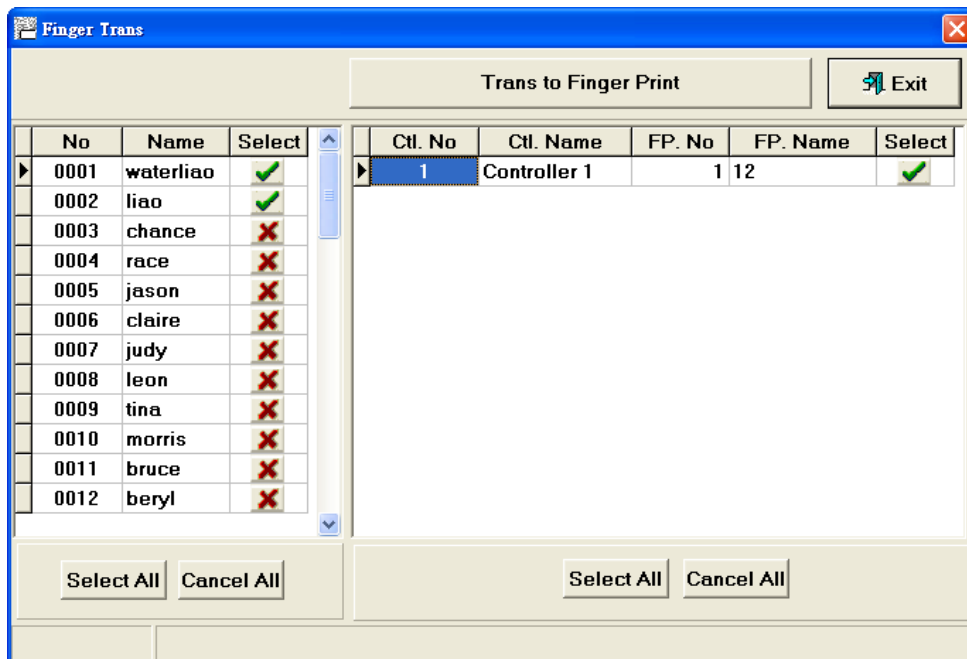


Delete fingerprint: After click delete fingerprint, then click once the fingerprint which want to delete. At this time, user need to be careful with the connection status, or it will be only delete the fingerprint data in database but not in fingerprint reader., it makes database and fingerprint reader asynchronous. When confirm delete fingerprint reader, it will according to the fingerprint device argument and delete all the communicated fingerprint data of fingerprint reader.

Fingerprint transmission



Main system flow chart



Select personnel at left side, select fingerprint reader at right side, after confirm click **Trans to Finger Print**, and the system will transmit all the fingerprints of the selected personnel to the designate reader.

It select multi reader, it will according to the sequence and transmit all select ed personnel.

