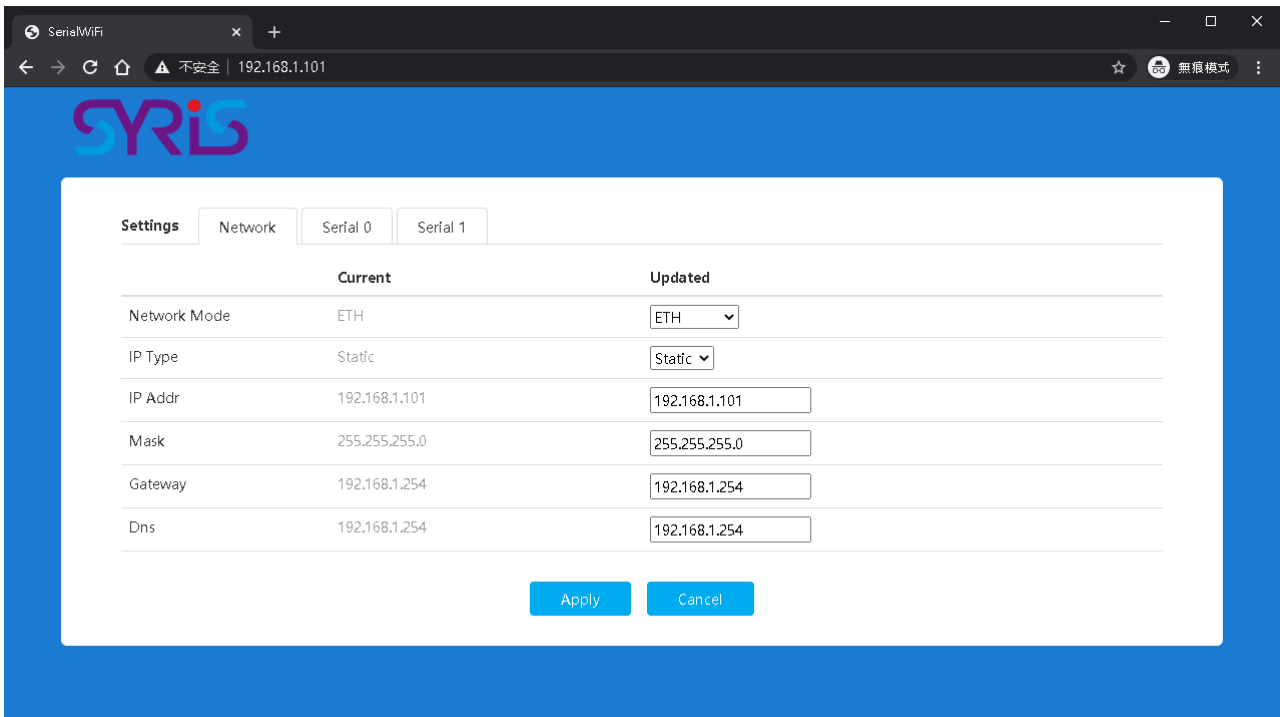
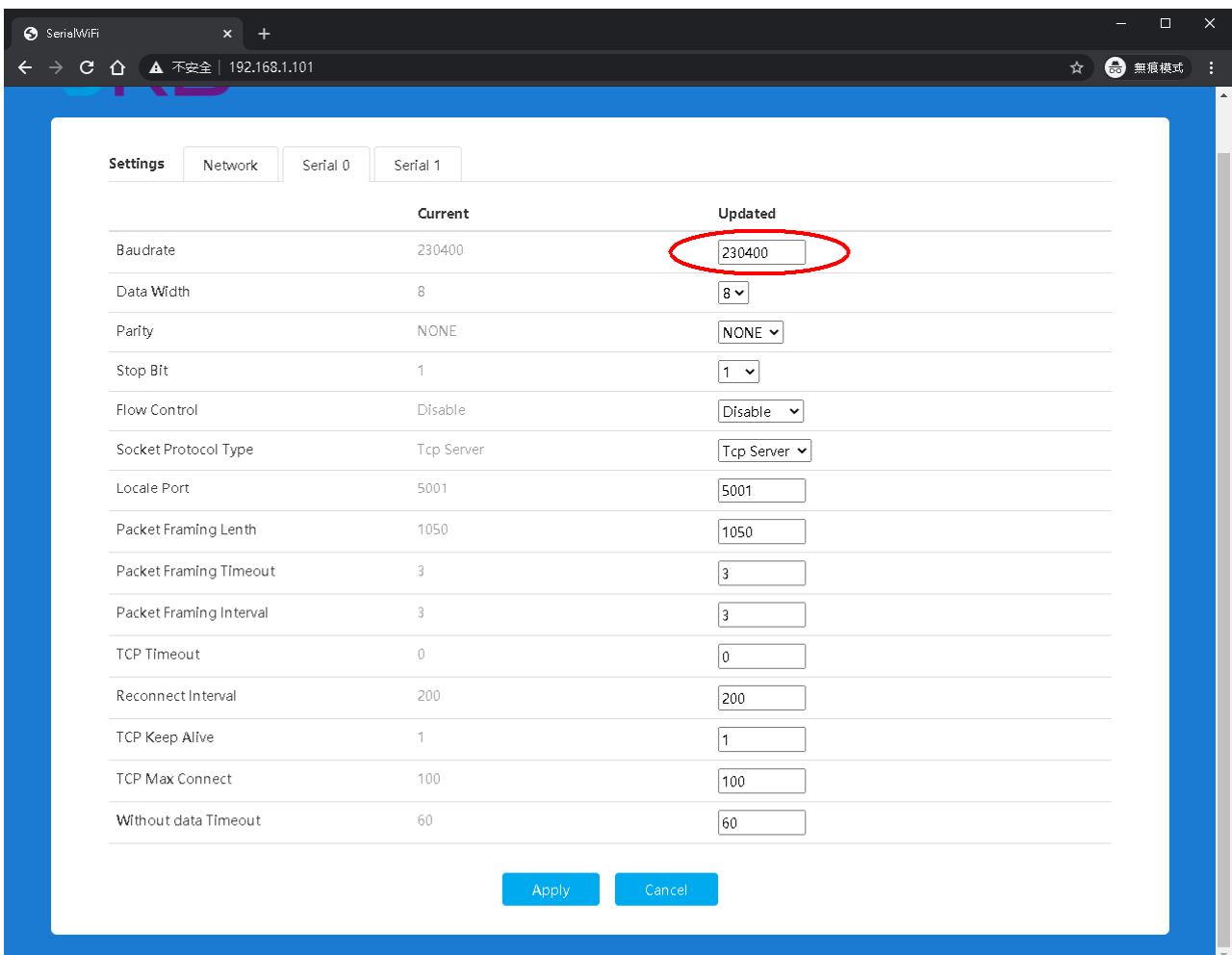


Press the initial button and login device setting page with the default IP 192.168.1.101



Switch into Serial 0 page and modify the Baudrate setting 230400 then press Apply to save.

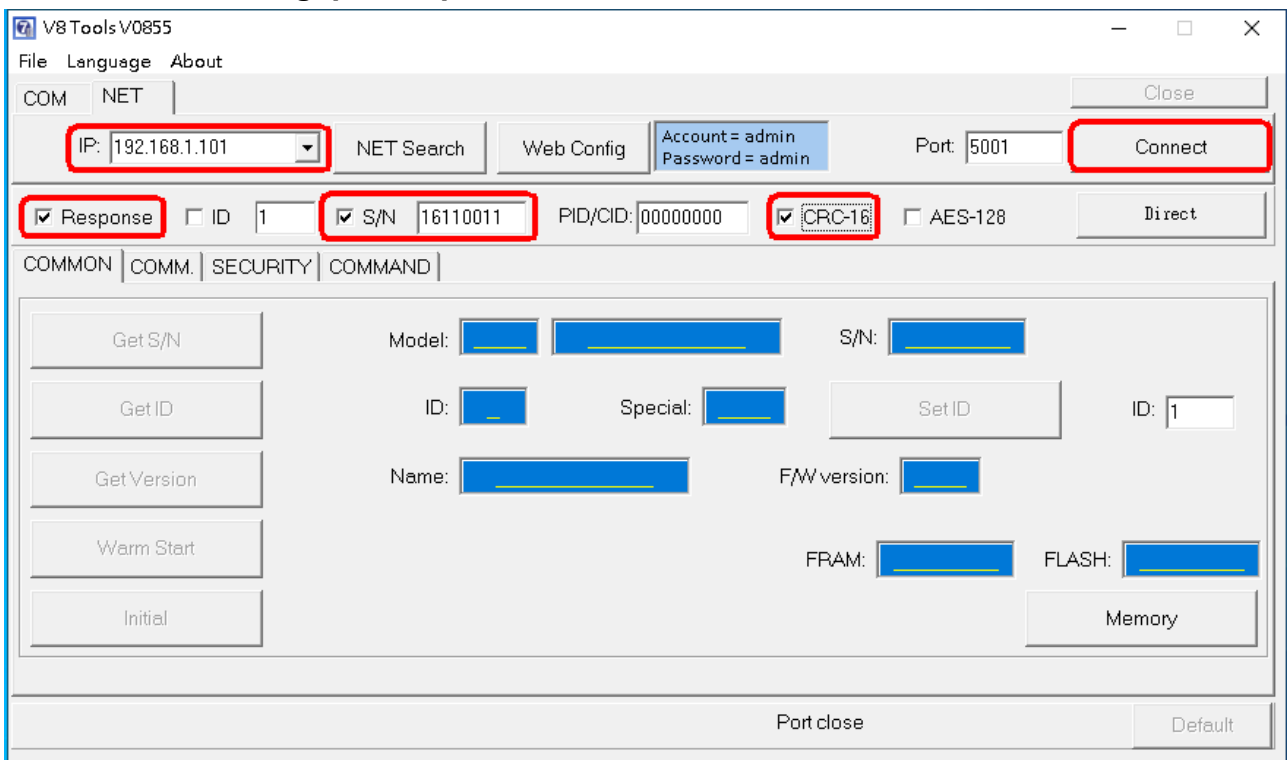


Download V8 Tools via

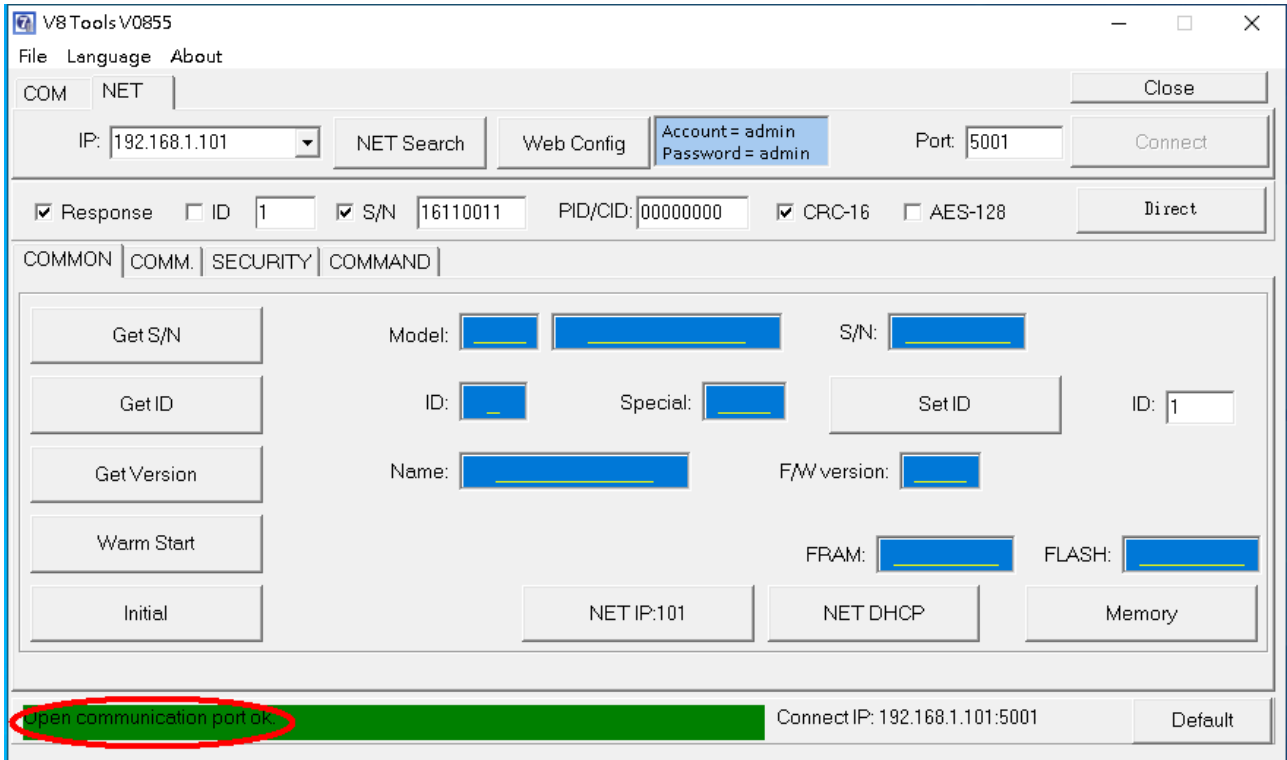
[http://ftp.syris.com/SYRIS\\_ACS\\_DVD-ROM/Tools/V8Tools/V8Tools\\_V0855\\_20200318.exe](http://ftp.syris.com/SYRIS_ACS_DVD-ROM/Tools/V8Tools/V8Tools_V0855_20200318.exe) and set the following check option checked : Response , S/N and CRC-16. The S/N information is get from the device sticker.



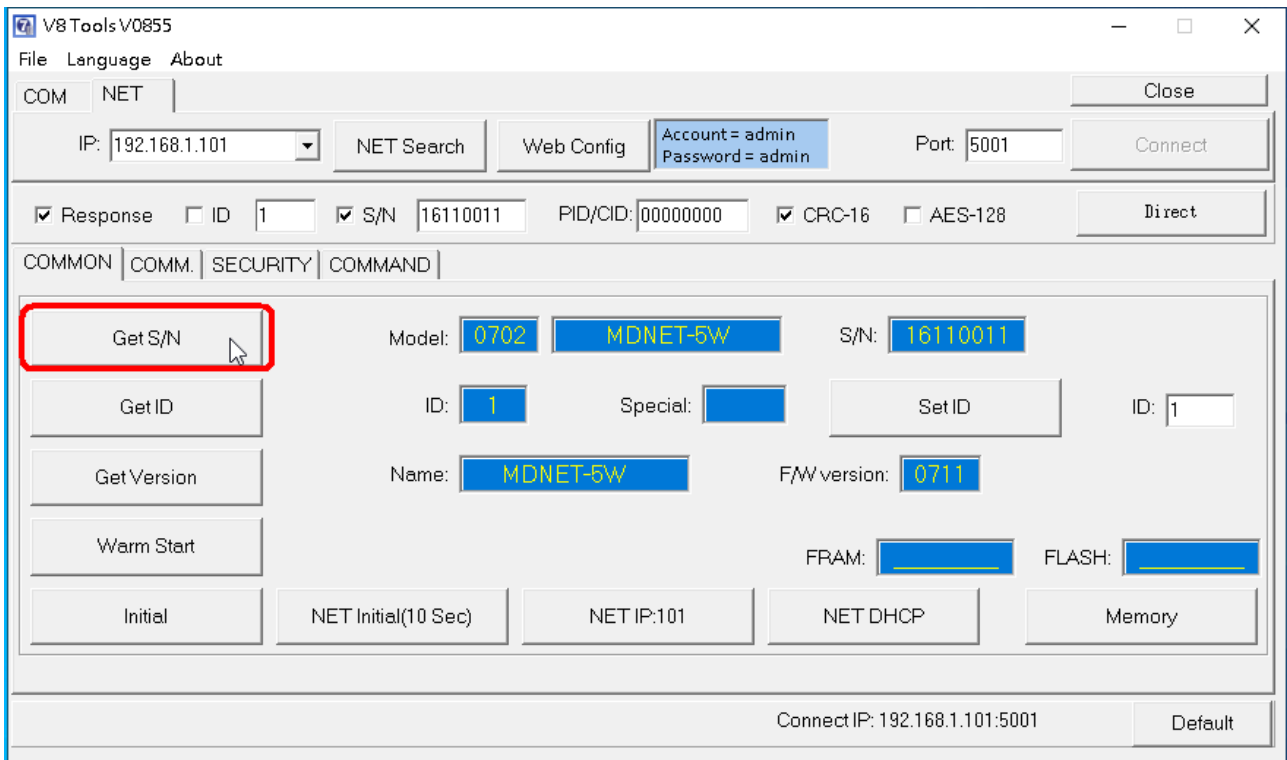
Finish all the setting, please press Connect to link the device.



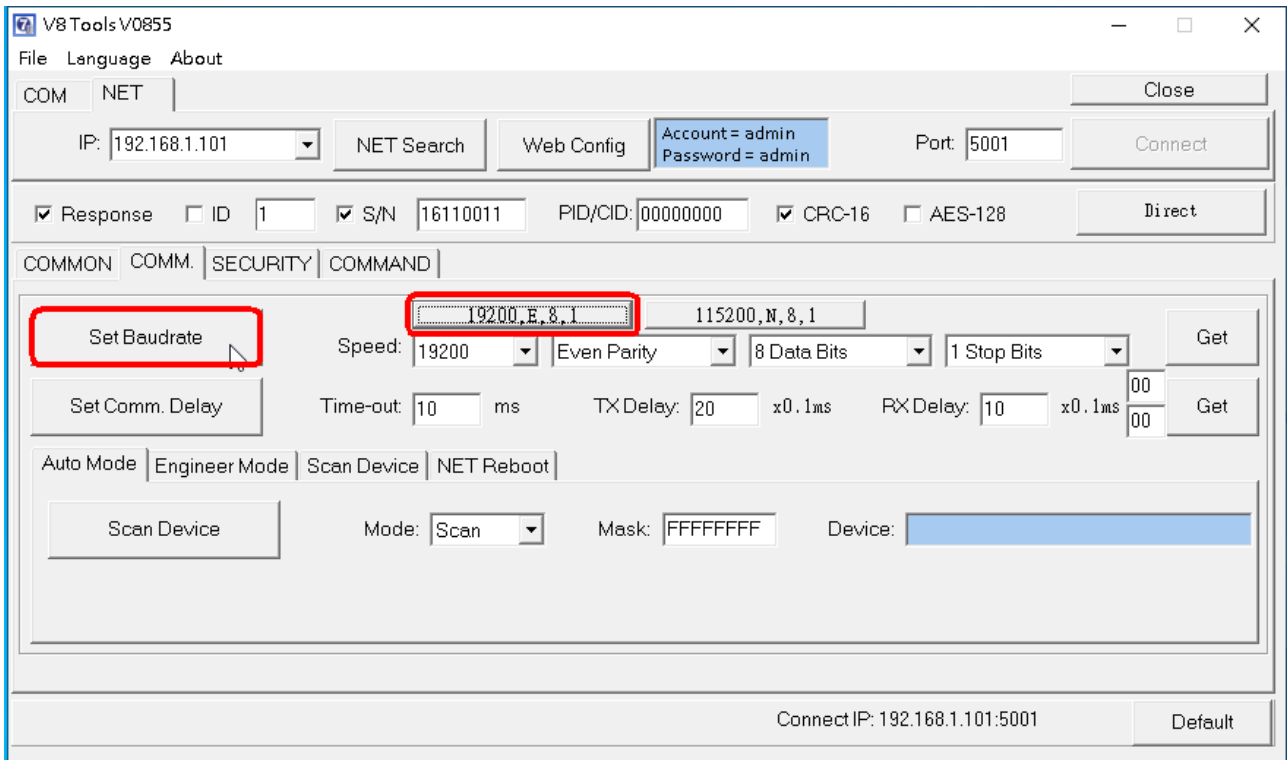
Link successfully if we see the green bar in the bottom of window.



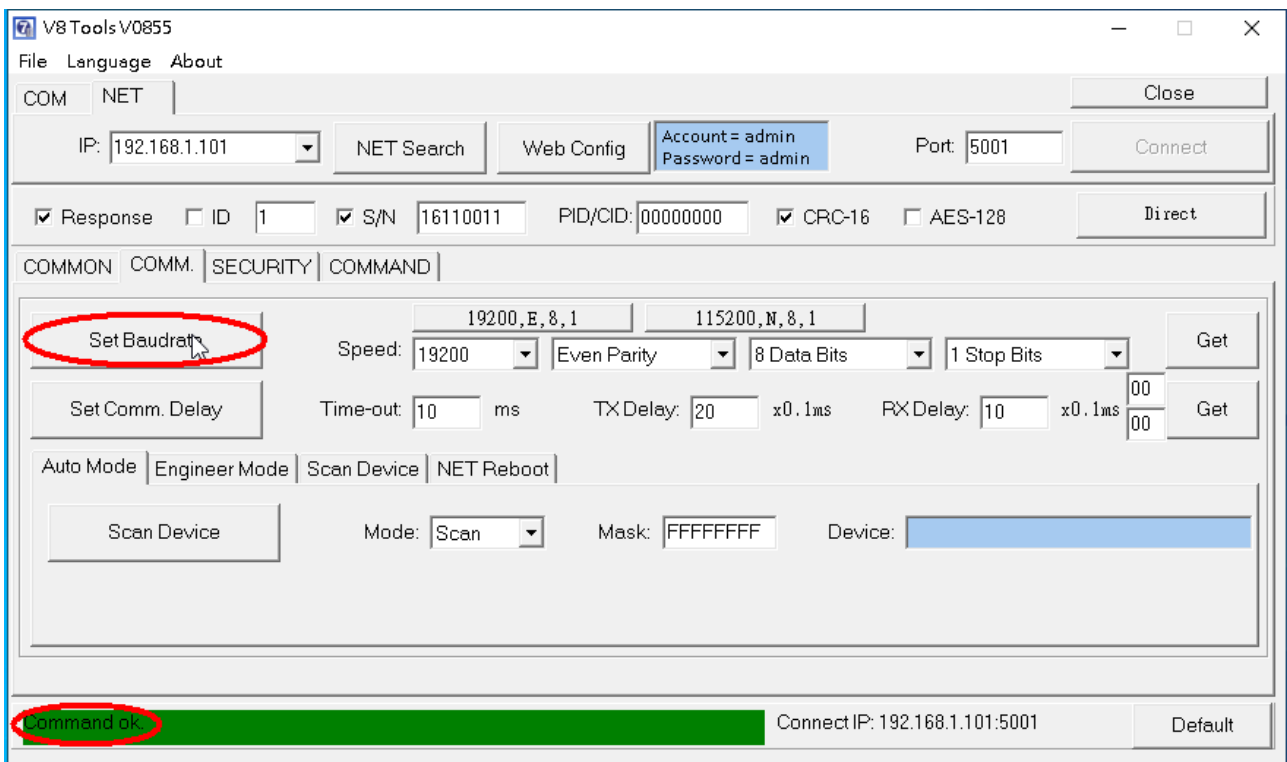
Press Get S/N.



Switch into COMM. page and press 19200,E,8,1 and then press Set Baudrate.



Same as above if we see green bar, the setting is saved.



Download SY230\_330\_630\_V8\_Tools via the link as following:

[http://ftp.syris.com/SYRIS\\_ACS\\_DVD-ROM/Tools/SY230\\_330\\_Tools\\_V0520\\_20181121/SY230\\_330\\_630\\_V8\\_Tools\\_V0520\\_20181121.exe](http://ftp.syris.com/SYRIS_ACS_DVD-ROM/Tools/SY230_330_Tools_V0520_20181121/SY230_330_630_V8_Tools_V0520_20181121.exe)

Run the tool and try to link the controller.

