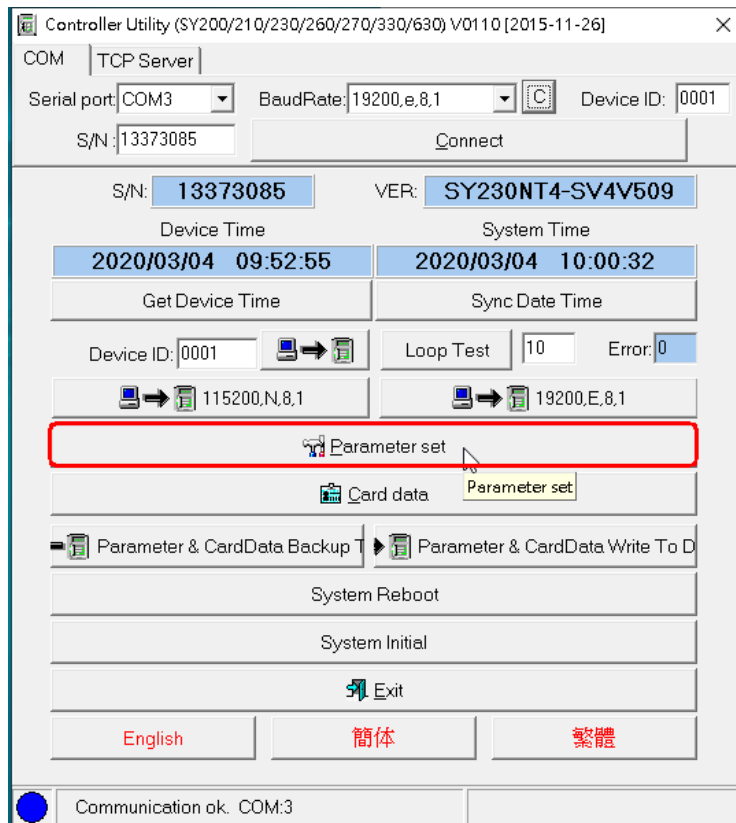
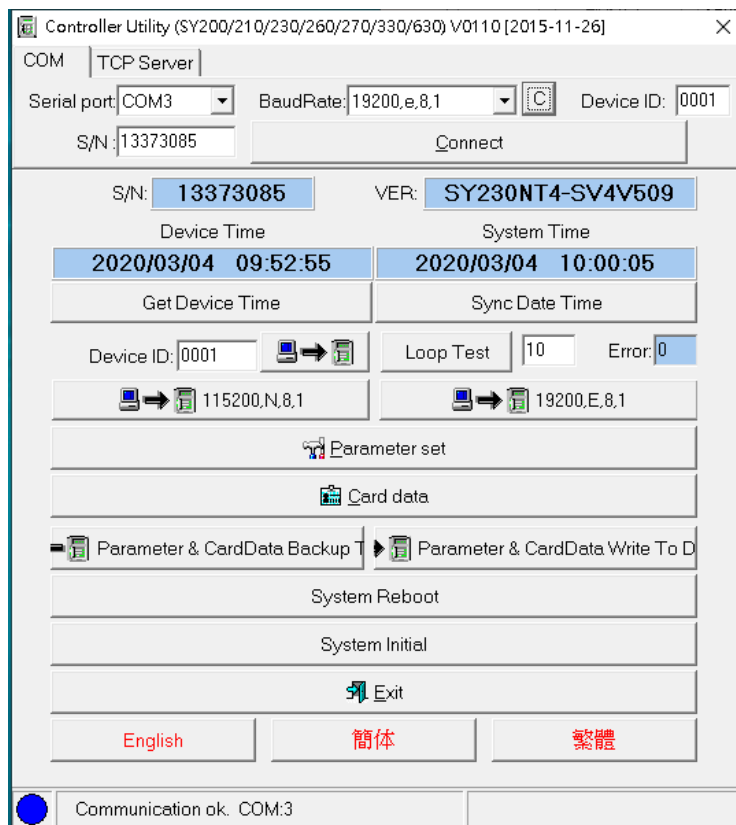
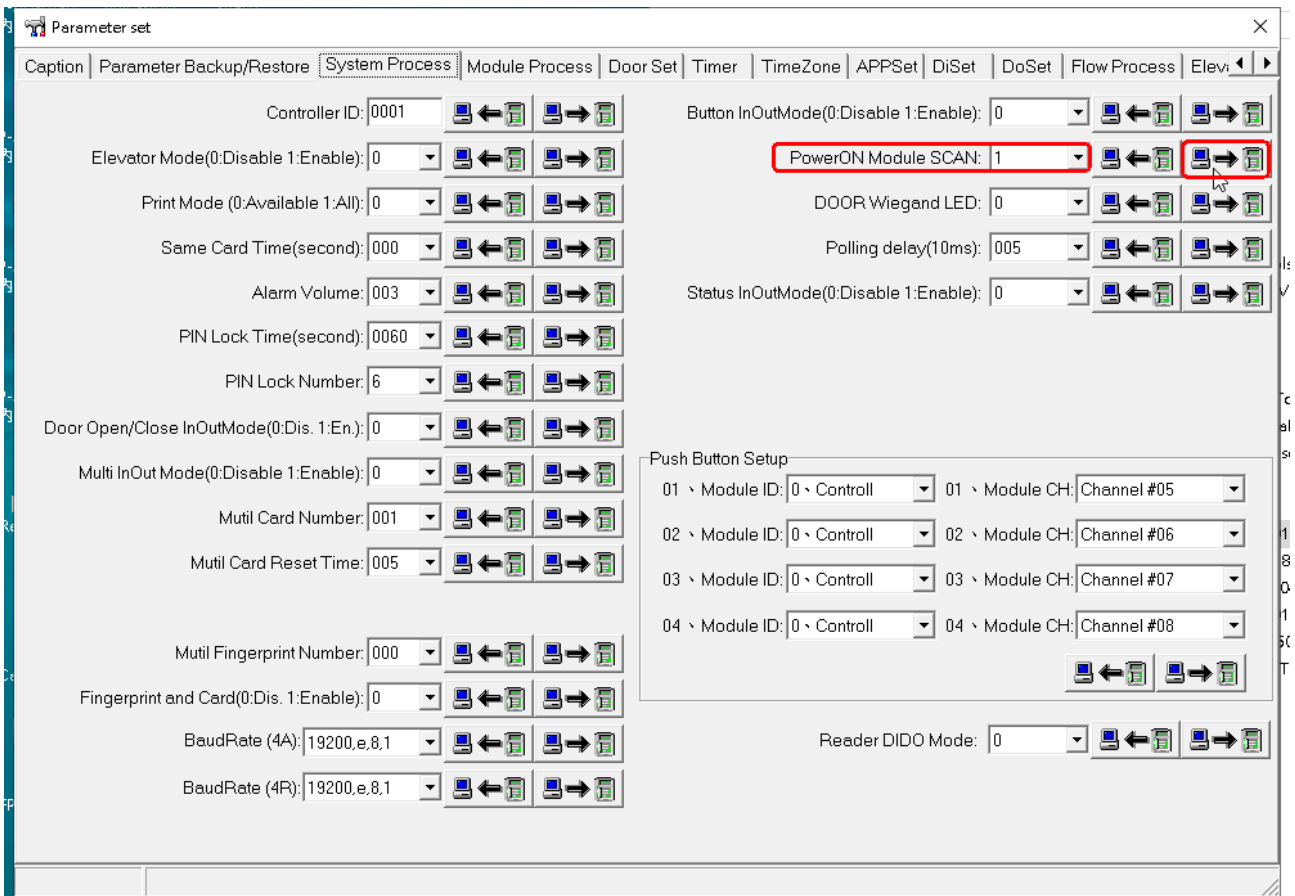
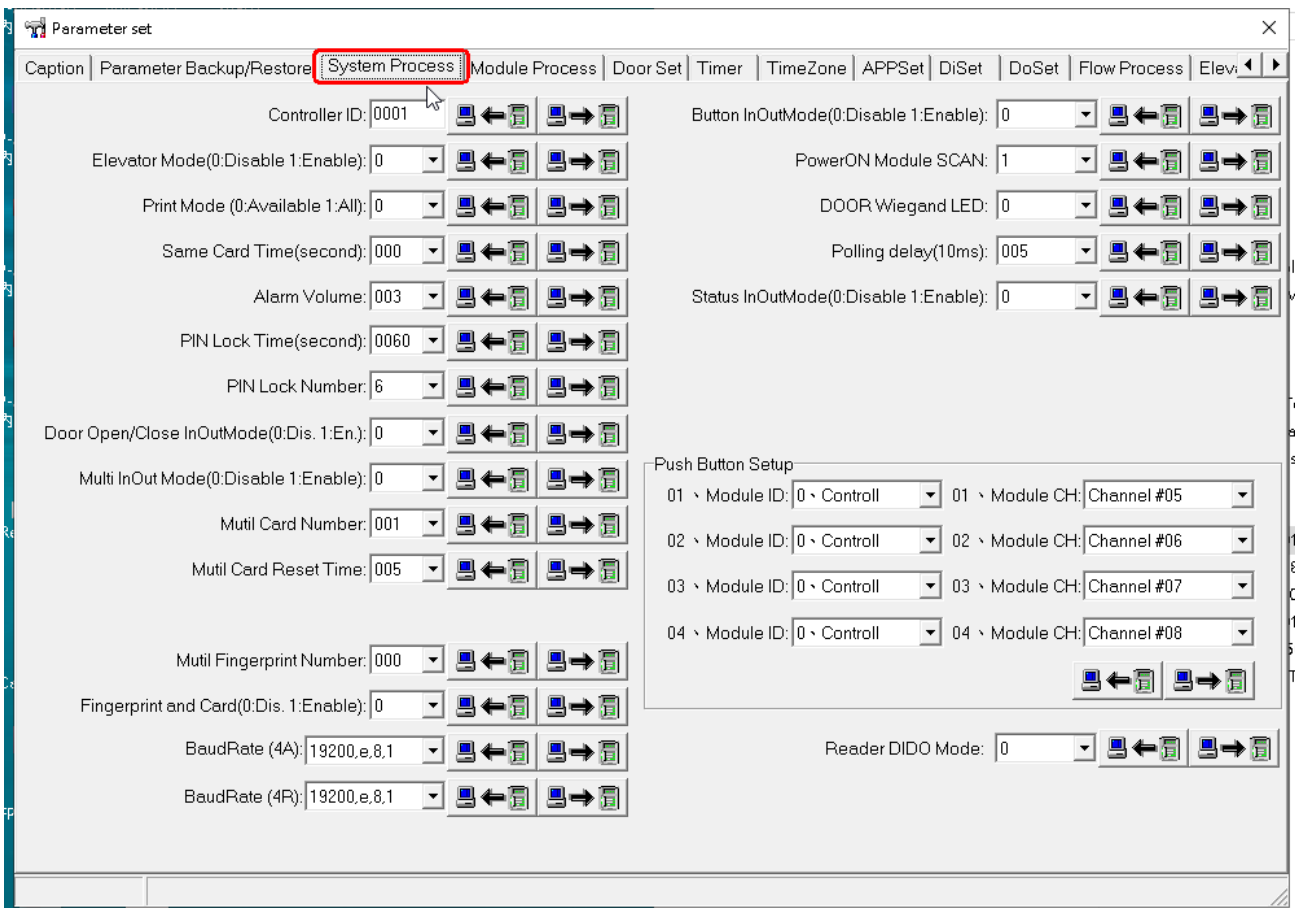


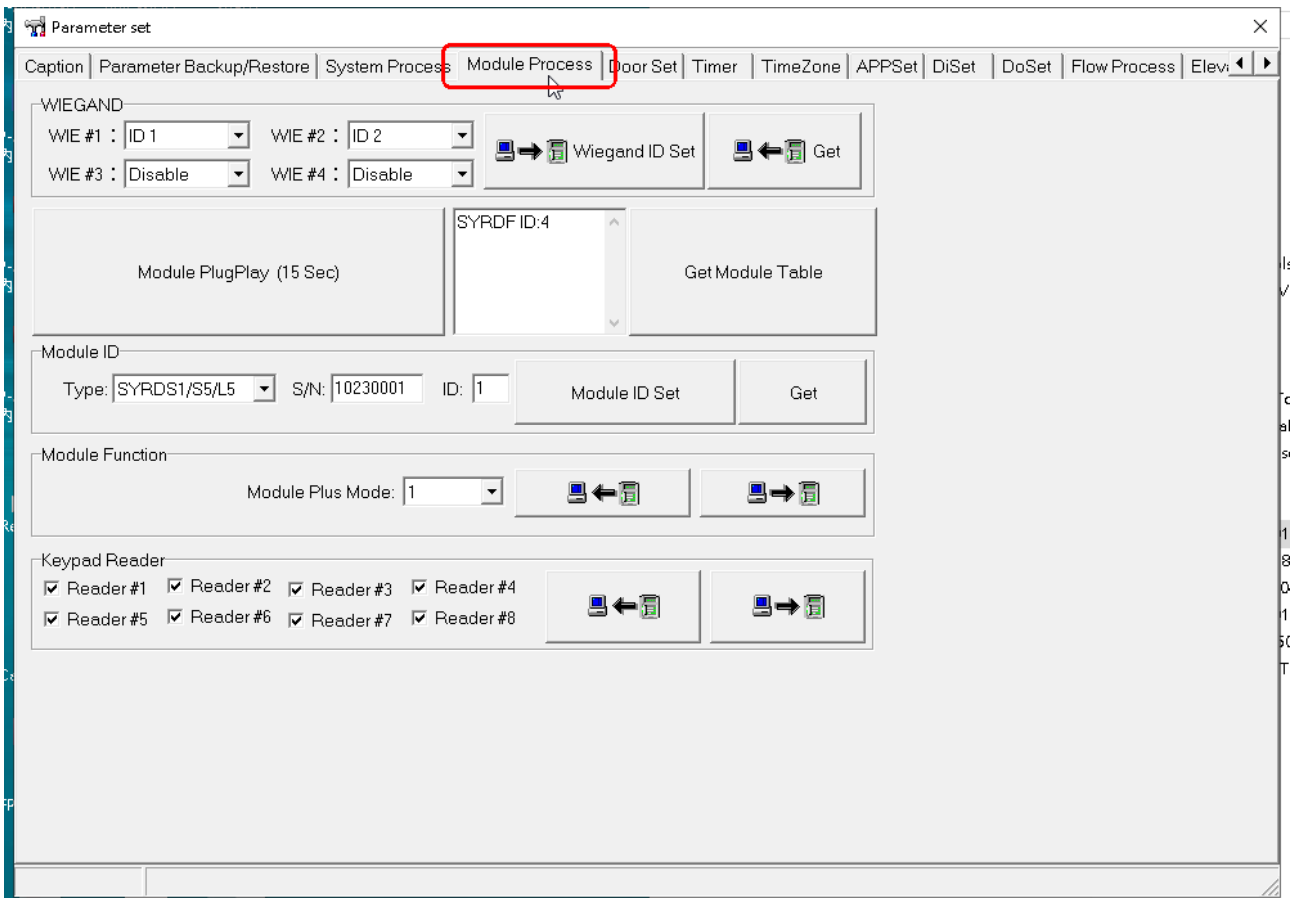
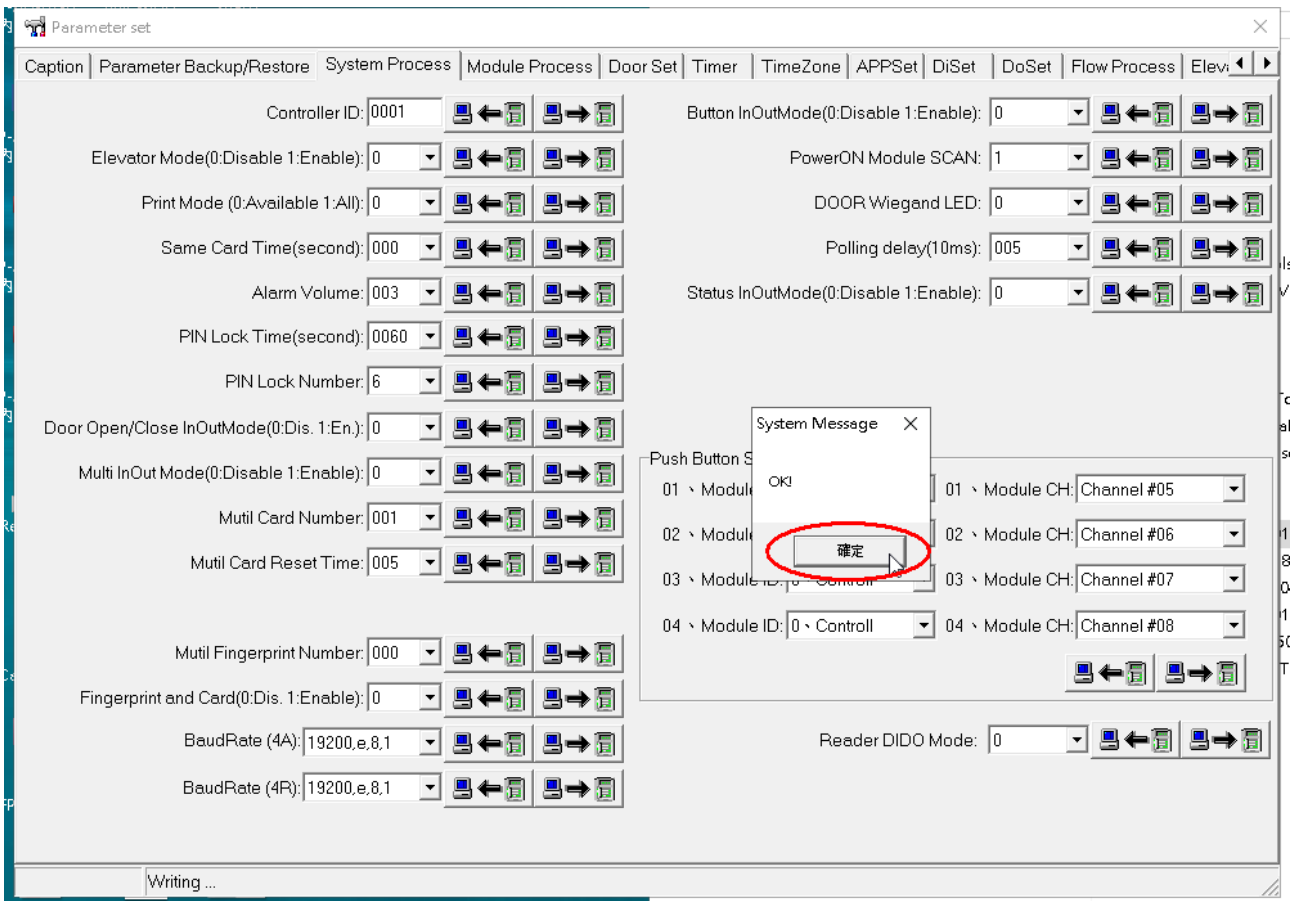
Download Controller Utility form the link as following:

http://ftp.syris.com/SYRIS_ACS_DVD-ROM/Tools/ControllerUtility_V0110_20151126.exe

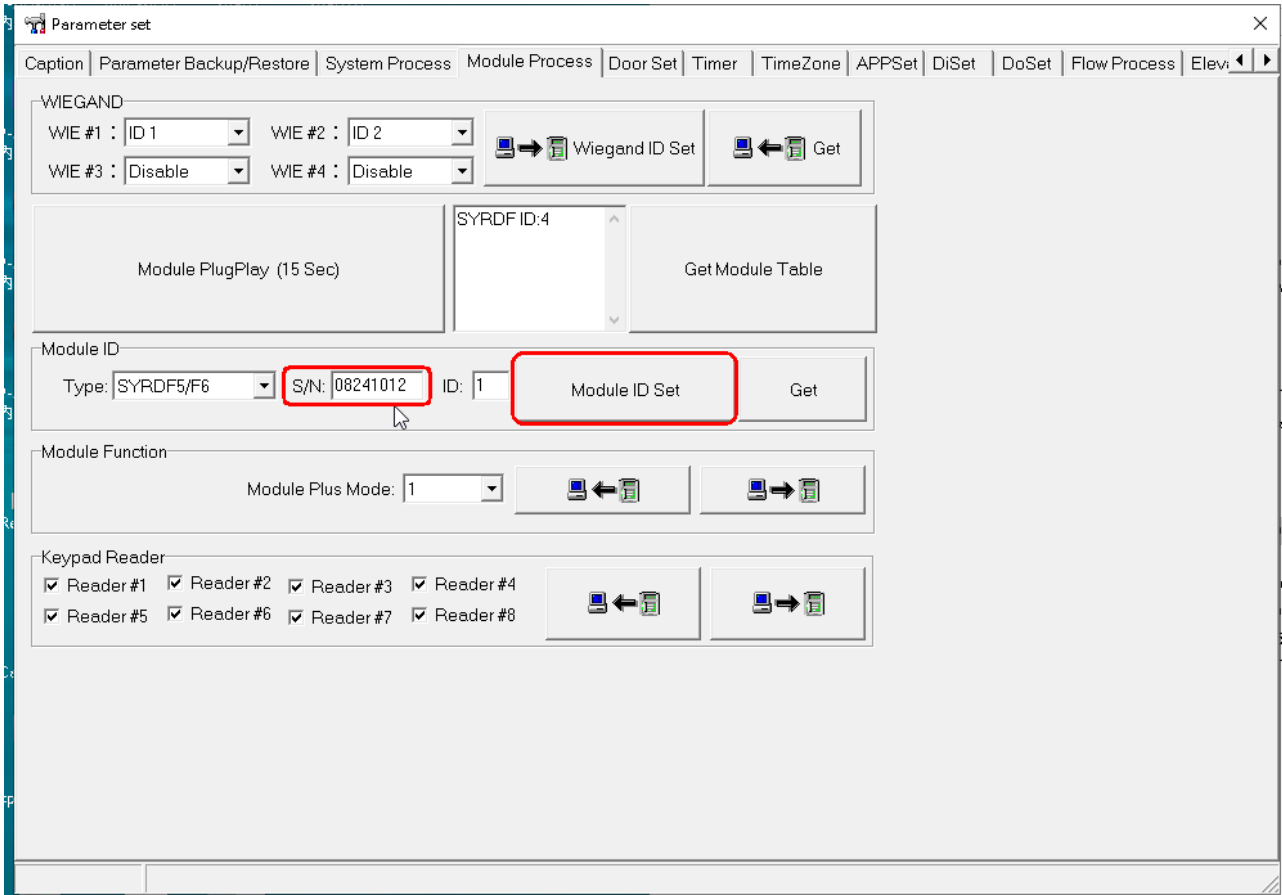
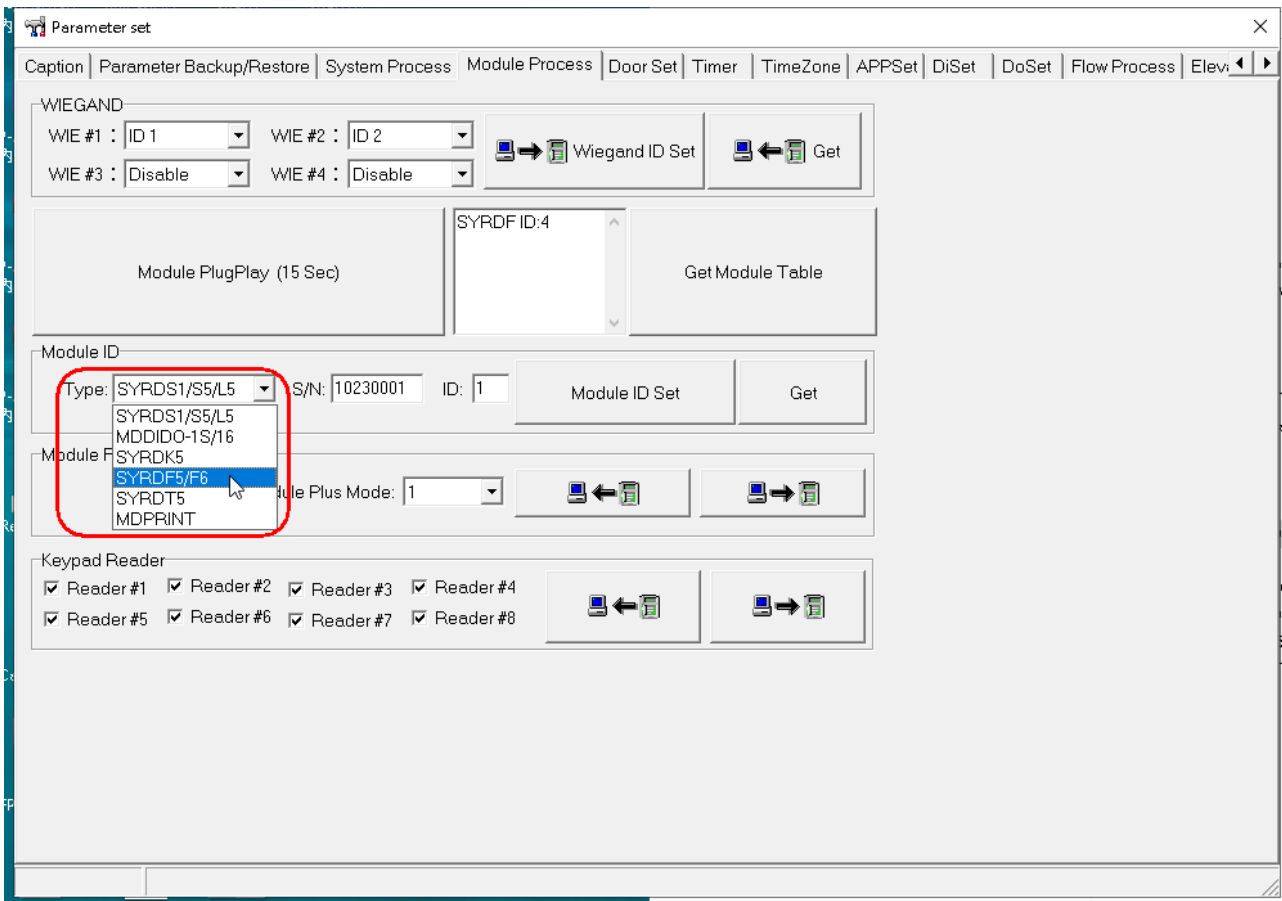




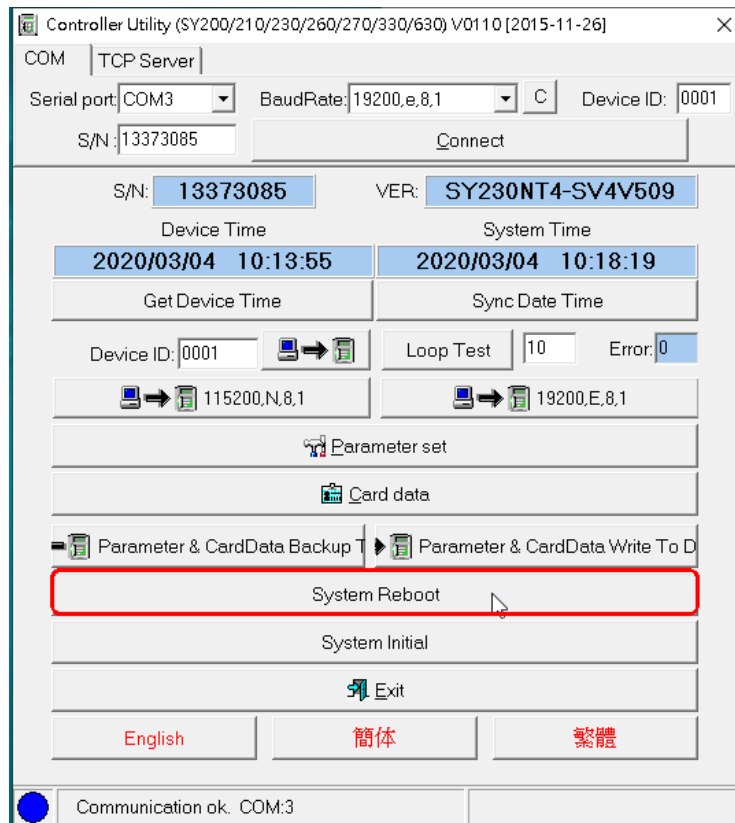
The setting will make controller do module plug&play automatically while the device reboot.



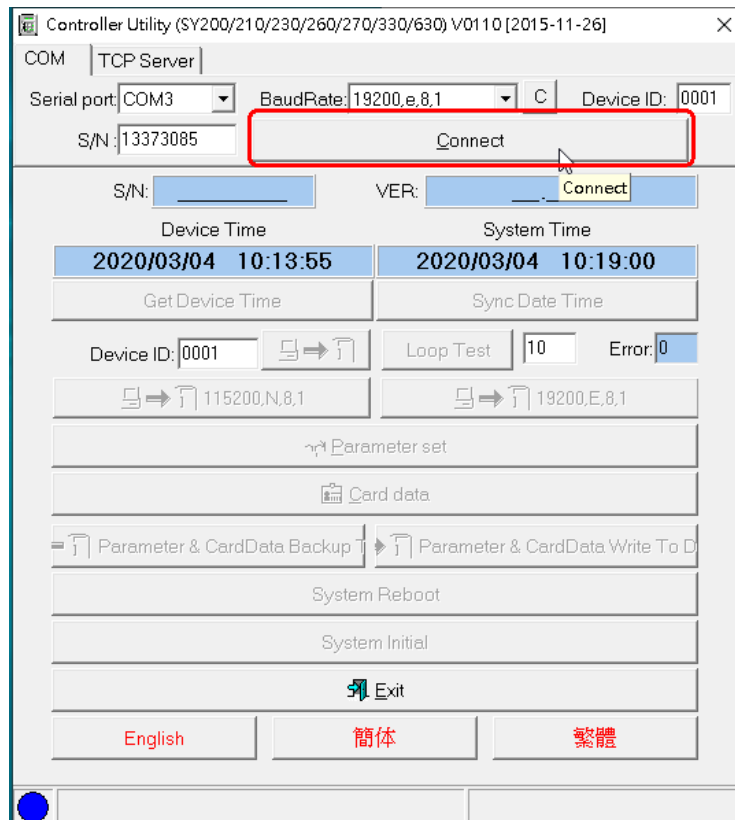
The demo reader is SYRDF5, so we set module type as SYRDF5/F6 in the next page. User can change it as your reader type.



Enter the reader serial number and you also can click **Get** to obtain the ID first. And if it is not you wish to setup, you can click **Module ID Set** to setup.



After finish above the setting, you can click **System Reboot** to the system. (This step is unnecessary).



Connect the controller again.

Controller Utility (SY200/210/230/260/270/330/630) V0110 (2015-11-26) X

COM | TCP Server

Serial port: COM3 BaudRate: 19200,e,8,1 C Device ID: 0001

S/N: 13373085 Connect

S/N: 13373085 VER: SY230NT4-SV4V509

Device Time	System Time
2020/03/04 10:14:55	2020/03/04 10:19:20
Get Device Time	Sync Date Time

Device ID: 0001 Loop Test: 10 Error: 0

115200,N,8,1 19200,E,8,1

Parameter set

Card data

Parameter & CardData Backup | Parameter & CardData Write To D

System Reboot

System Initial

Exit

English 簡體 繁體

Communication ok. COM:3