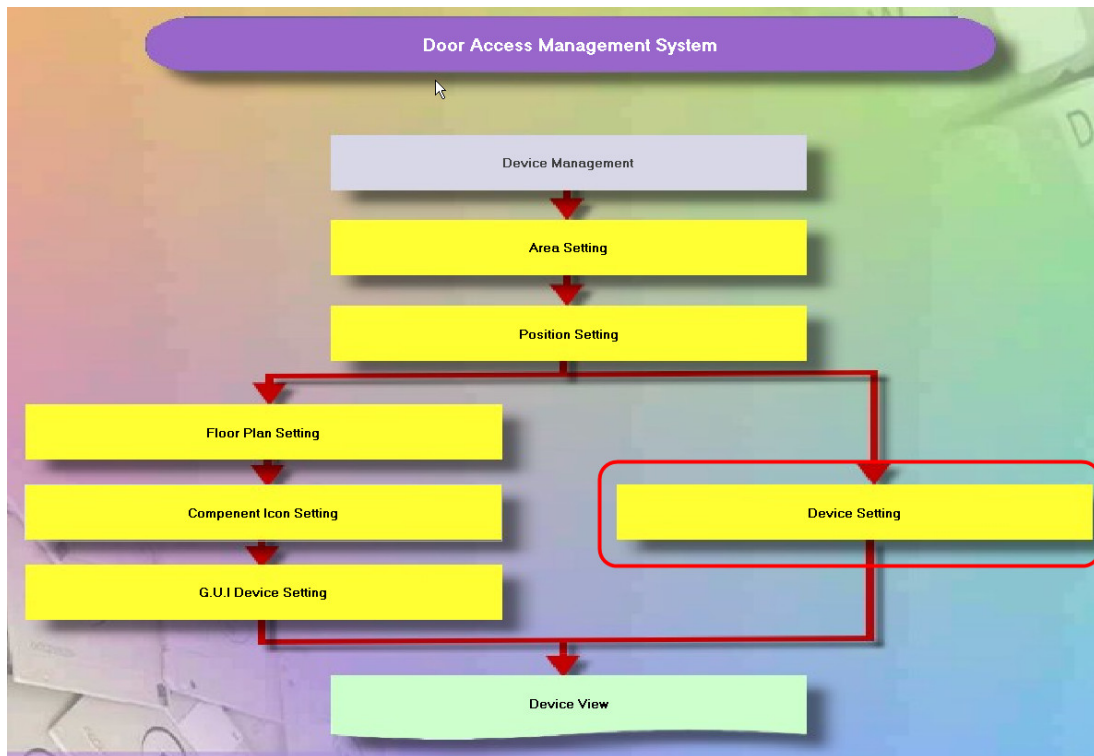


Please create controller and do proper setting in Device Setting while we try to link SY330NT and SYSOFT-230.



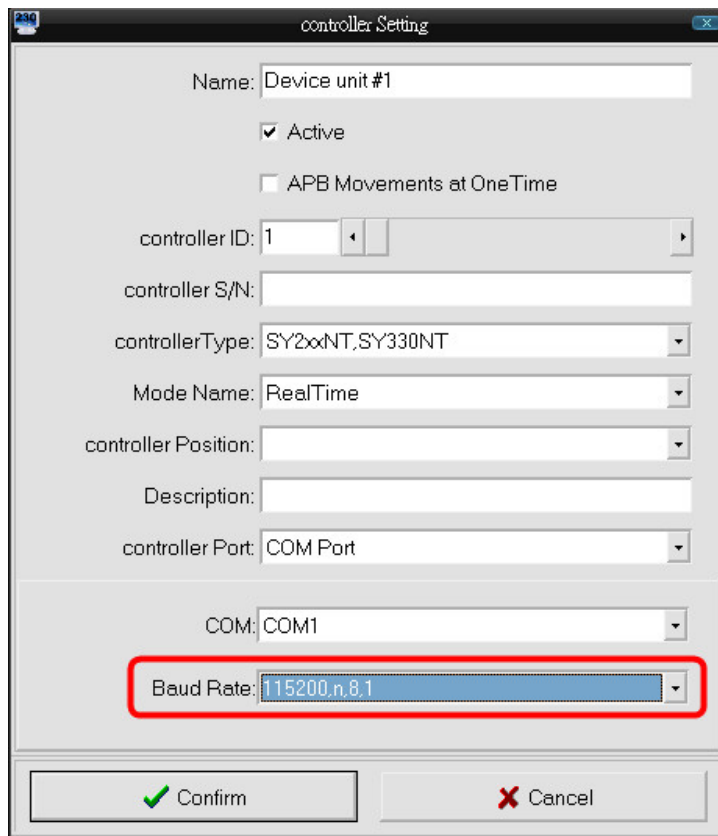
The screenshot shows the 'Controller Setting' window. The title bar includes the text 'Controller Setting' and a close button. The interface features a toolbar with icons for file operations and navigation. Below the toolbar, there are tabs for 'Controller', 'Module', 'DI', 'DO', and 'Door'. The main area contains several input fields and checkboxes for configuring a controller. A table at the bottom lists controller details.

Controller Name:   APB Movement L  
 Enable Mode:   
Controller ID:  Controller Port:   
Controller No:  Controller Type:   
Controller Site:  Description:

Controller Name	Device Enable	Device ID	Device SERIAL	Device Mode	Device Port N	Device Type	Site	Description

View

Please select correct setting of COM PORT & Baudrate while we choose RS485 mode in the system.  
Default Baudrate value of SY330NT is 115200,n,8,1.



Please confirm to fill-in correct IP information while using TCP/IP mode.

