

Push Button Setting (SY330 NT4-SV5/PV5)

1. Push Button Setting

System

↓

Login

↓

IO Process

↓

Door Button

↓

Button Door:[X] (Choose will be activated door)

↓

Button IDX|CHXX (ID0 : relay comes from controller , IDX : relay comes from other module and the ID from other module ; CHXX: tunnel and is also input DI point)

2. Push Button Relay Action Time Setting

System

↓

Login

↓

IO Process

↓

Door Relay

↓

Relay Door:[X] (Choose will be activated door)

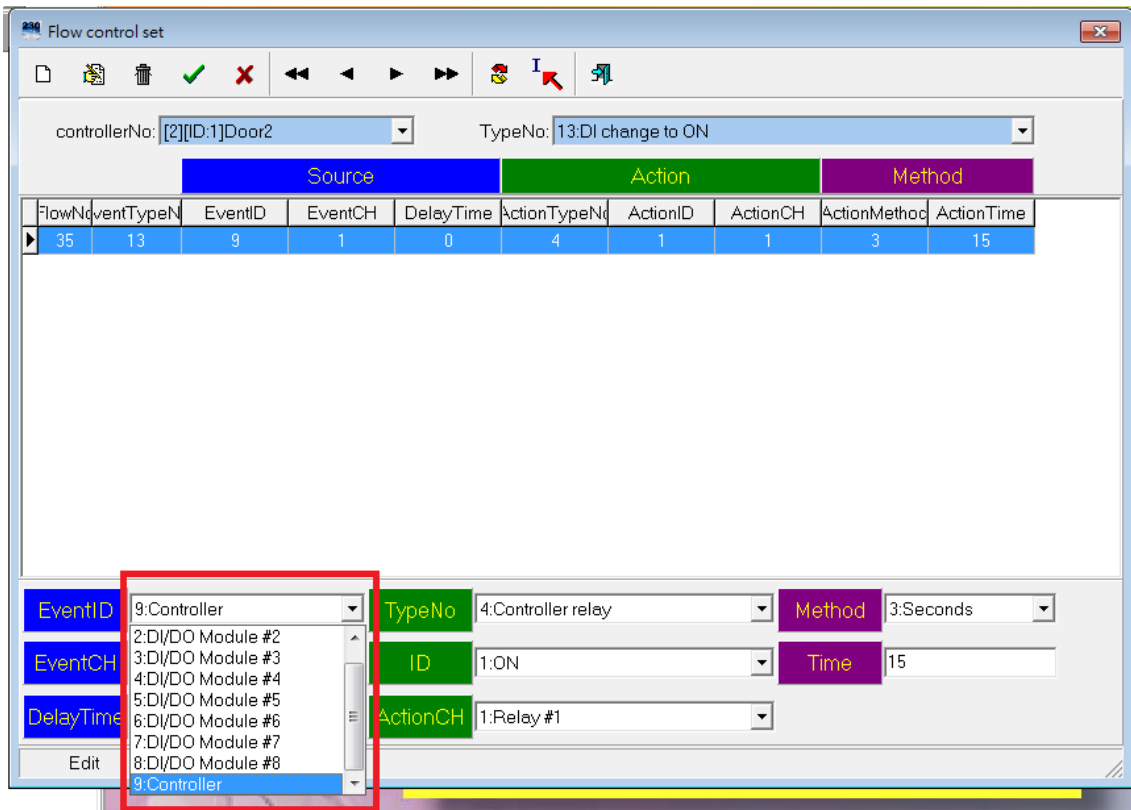
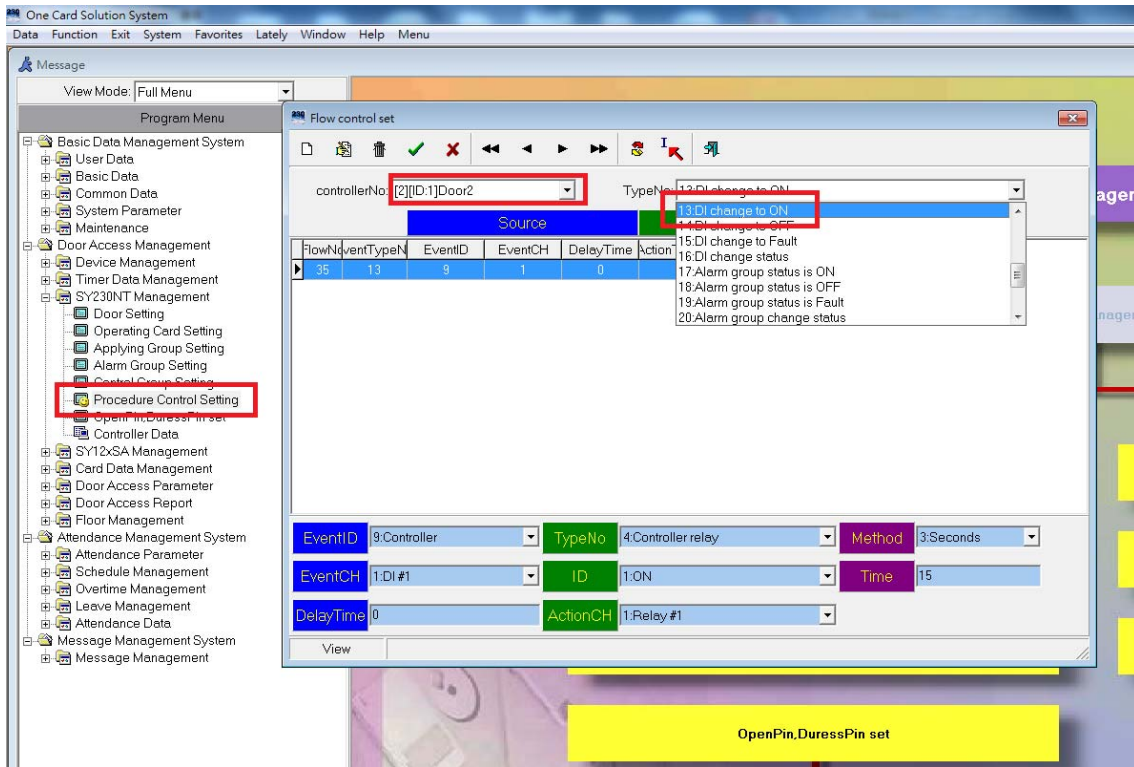
↓

Rrelay IDX|CHXX (ID0 : relay comes from controller , IDX : relay comes from other module and the ID from other module ; CHXX: tunnel and is also input DI point)

↓

Relay Time :XXX (Relay action time)

Push Button Setting by using SY330 NT4-SV5/PV5 +SYSOFT-230



Flow control set

controllerNo: [2][ID:1]Door2 TypeNo: 13:DI change to ON

| Source | | | | | Action | | | Method | | |
|--------|------------|---------|---------|-----------|--------------|----------|----------|--------------|------------|--|
| FlowNo | EventTypeN | EventID | EventCH | DelayTime | ActionTypeNo | ActionID | ActionCH | ActionMethod | ActionTime | |
| 35 | 13 | 9 | 1 | 0 | 4 | 1 | 1 | 3 | 15 | |

EventID: 9:Controller TypeNo: 4:Controller relay Method: 3:Seconds

EventCH: 1:DI #1 ID: 1:ON Time: 15

DelayTime: 0 ActionCH: 1:Relay #1

1:DI #1
2:DI #2
3:DI #3
4:DI #4
5:DI #5
6:DI #6
7:DI #7
8:DI #8

Flow control set

controllerNo: [2][ID:1]Door2 TypeNo: 13:DI change to ON

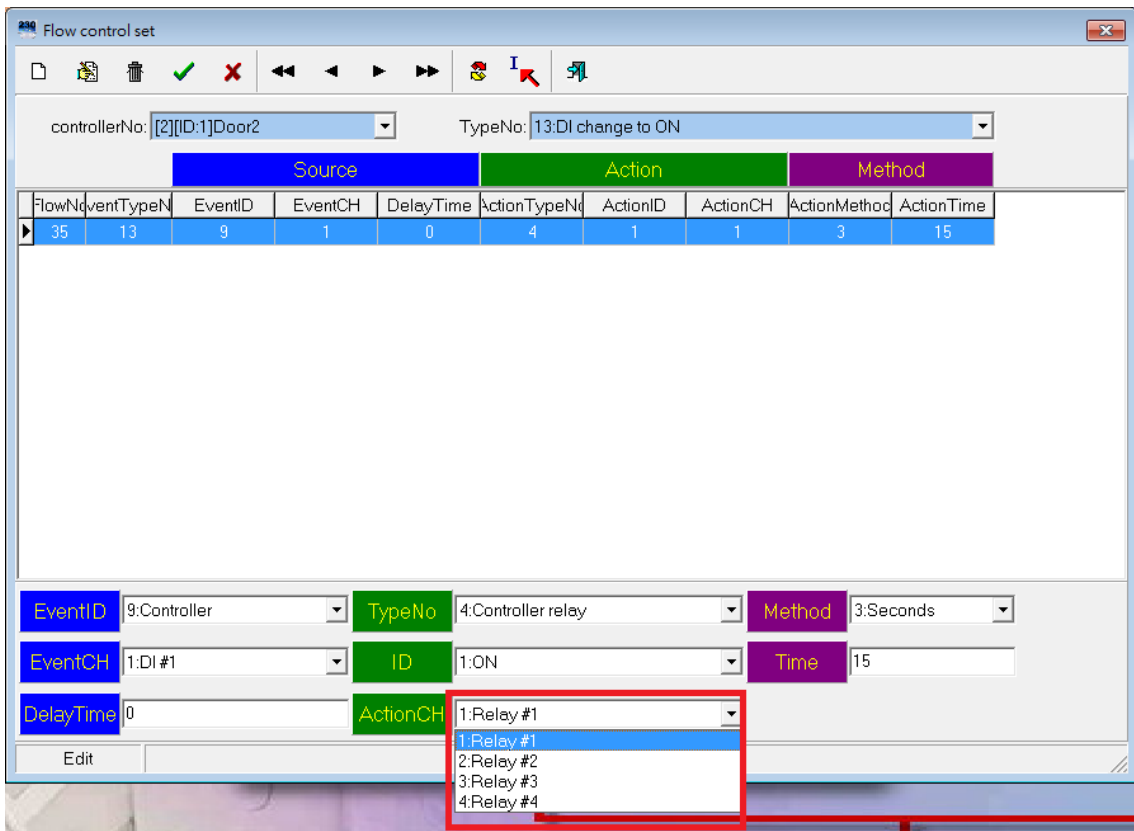
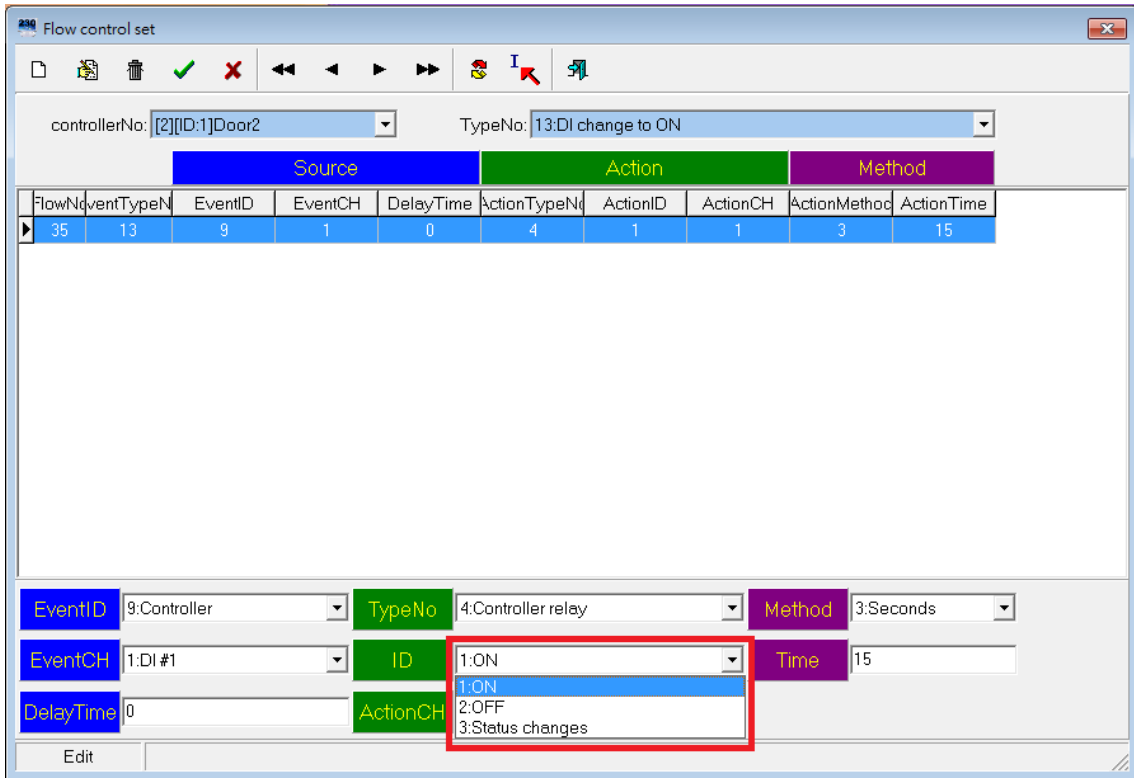
| Source | | | | | Action | | | Method | |
|--------|------------|---------|---------|-----------|--------------|----------|----------|--------------|------------|
| FlowNo | EventTypeN | EventID | EventCH | DelayTime | ActionTypeNo | ActionID | ActionCH | ActionMethod | ActionTime |
| 35 | 13 | 9 | 1 | 0 | 4 | 1 | 1 | 3 | 15 |

EventID: 9:Controller TypeNo: 4:Controller relay Method: 3:Seconds

EventCH: 1:DI #1 ID: 1:ON Time: 15

DelayTime: 0 ActionCH: 1:Relay #1

4:Controller relay
5:DI/DO module relay ON
6:DI/DO module relay OFF
7:DI/DO module relay status change
8:Display user designed message
9:Display data
10:Card checking
11:Add incoming and outgoing rec



Flow control set

controllerNo: [2][ID:1]Door2 TypeNo: 13:DI change to ON

| Source | | | | Action | | | Method | | | |
|--------|------------|---------|---------|-----------|--------------|----------|----------|--------------|------------|--|
| FlowNo | eventTypeN | EventID | EventCH | DelayTime | ActionTypeNo | ActionID | ActionCH | ActionMethod | ActionTime | |
| 35 | 13 | 9 | 1 | 0 | 4 | 1 | 1 | 3 | 15 | |

EventID: 9:Controller TypeNo: 4:Controller relay Method: 3:Seconds

EventCH: 1:DI #1 ID: 1:ON Time: 1:Flash all the time

DelayTime: 0 ActionCH: 1:Relay #1 2:Hundreds milliseconds

3:Seconds

4:Minutes

Edit

Flow control set

controllerNo: [2][ID:1]Door2 TypeNo: 13:DI change to ON

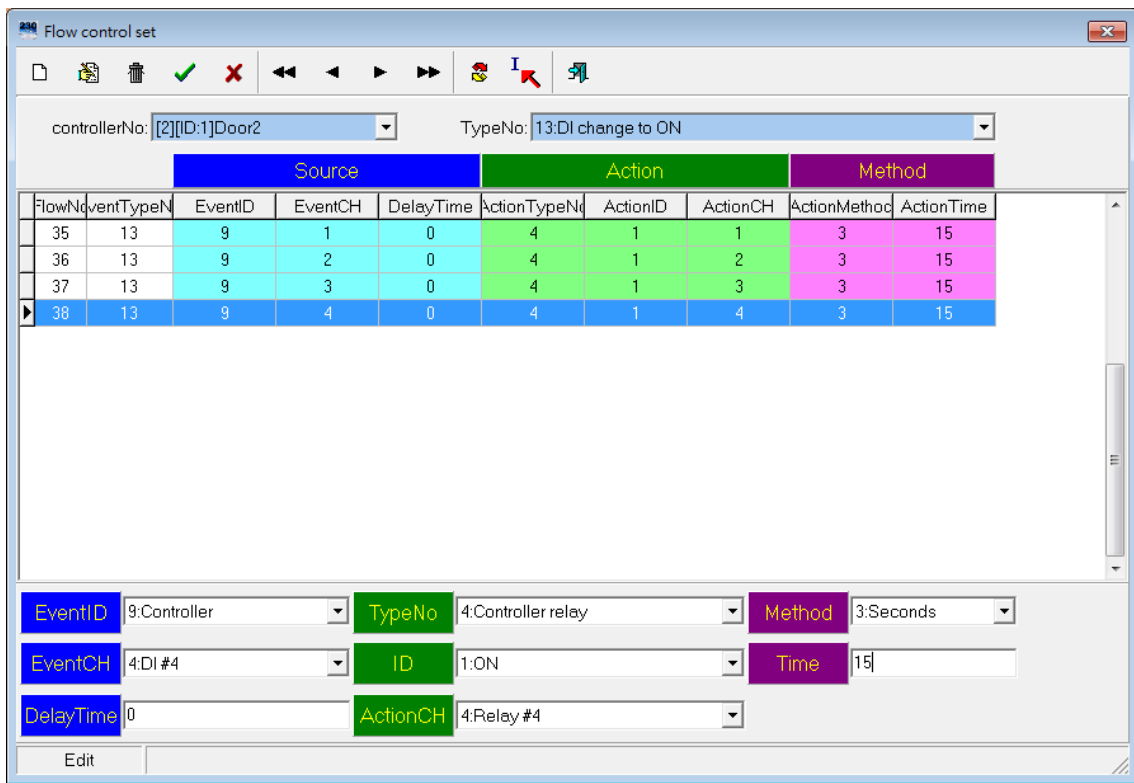
| Source | | | | Action | | | Method | | | |
|--------|------------|---------|---------|-----------|--------------|----------|----------|--------------|------------|--|
| FlowNo | eventTypeN | EventID | EventCH | DelayTime | ActionTypeNo | ActionID | ActionCH | ActionMethod | ActionTime | |
| 35 | 13 | 9 | 1 | 0 | 4 | 1 | 1 | 3 | 15 | |

EventID: 9:Controller TypeNo: 4:Controller relay Method: 3:Seconds

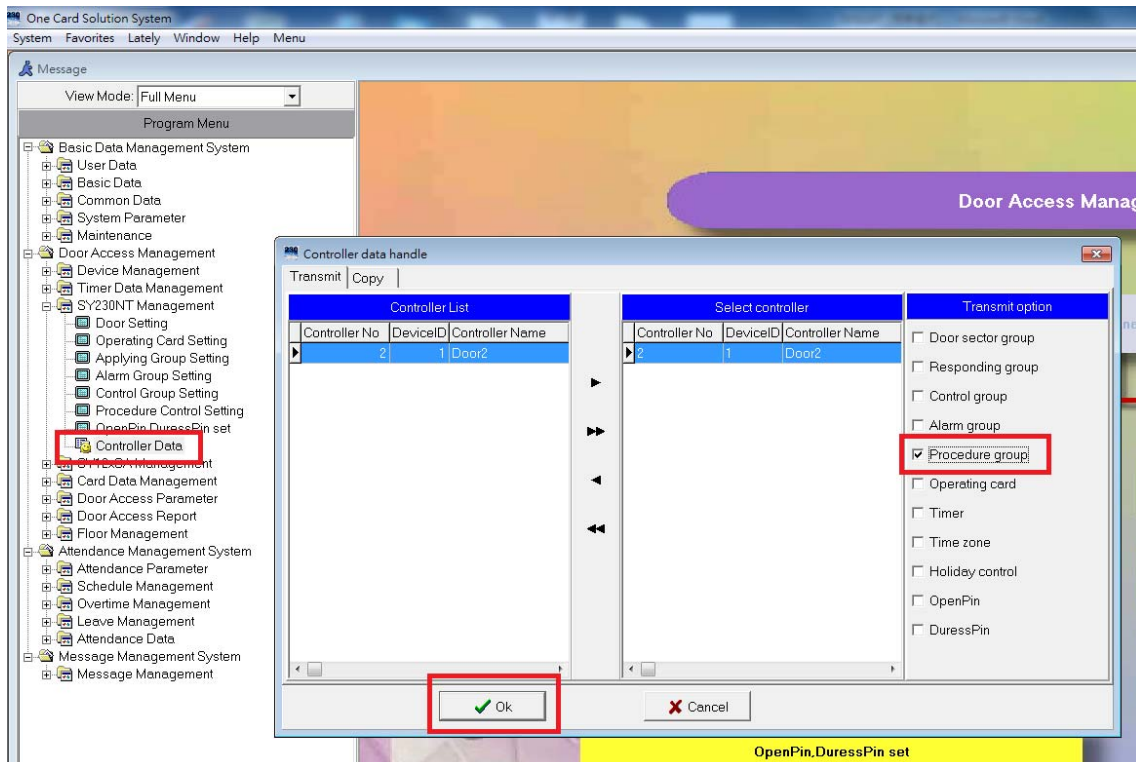
EventCH: 1:DI #1 ID: 1:ON Time: 15

DelayTime: 0 ActionCH: 1:Relay #1

Edit



Push button of other doors settings are the same as above.



Please transfer settings to controller.